



SHD-1000F1

In-ceiling Mount



Key Features

- Color : White
- Materials : PC(Polycarbonate)
- Dimensions (WXH) : ø137x131mm (ø5.39x5.15")
※ Ceiling hole size : ø119mm (ø4.69")
- Weight : 250g (0.55lb)
- Max. load : 1.5kg (3.31lb)
※ Maximum load of ceiling board : 3kg (6.61lb)

Compatible Accessories (Optional)



QNF-9010



QNF-8010

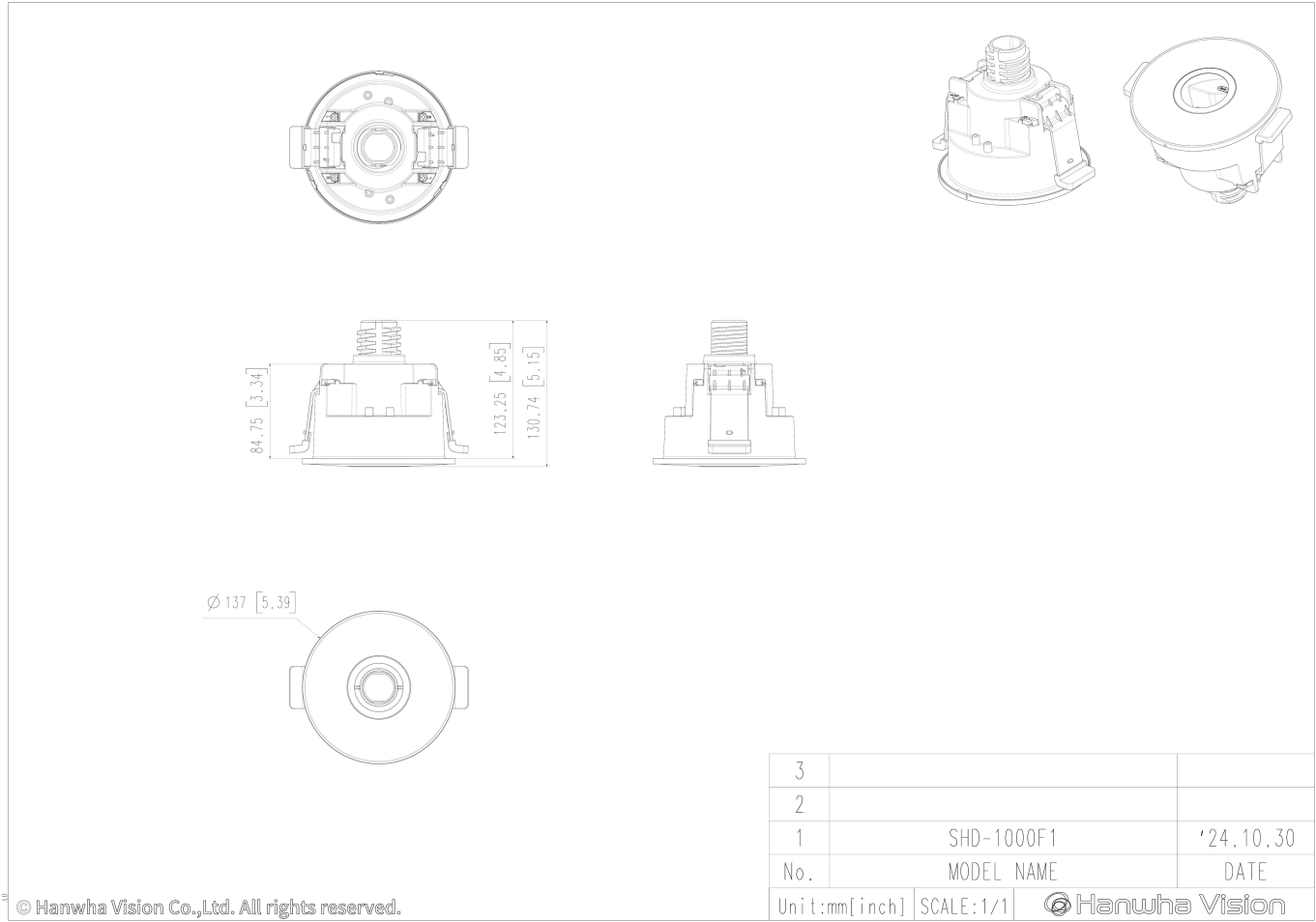
SHD-1000F1

In-ceiling Mount



CAD

Unit:mm [inch]



© Hanwha Vision Co.,Ltd. All rights reserved.