

# FoxVigi

## Perimeter Protection via “custom-made” video analysis

FoxVigi intrusion detection, one of Foxstream’s core developments, is the result of many years of research and collaboration with the CNRS laboratories, as well as field experiences from thousands of sites. FoxVigi combines reliability & power, for a tailor-made solution with immediate alarm qualification. These developments enable Foxstream to meet the requirements of the most important market players worldwide.

Over the past 3 years, we have developed & tested a specific analysis dedicated to thermal cameras, to further reduce false alarms on this type of sensor.

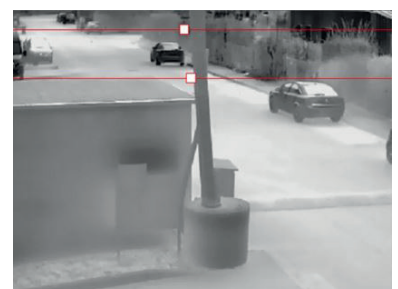
This **intrusion detection on thermal cameras** is even more relevant, efficient & robust!

In particular, it allows:

- **Better filtering of small objects**, on long distances or in groups.
- **A multizone analysis**, to detect even better further objects.

This new advanced analysis also offers **an optimized user experience!** The setting is even more simplified and intuitive: it is done by levels in the image, with an improved selection of options.

It is therefore easily configurable by installers!



FoxVigi is designed for the outdoor surveillance of a building's surroundings. It provides an **intelligent server-based video analysis** that can detect **any type of intrusion whilst eliminating false alarms**.

FoxVigi offers a **parameter assistant tool** to refine the established configuration, as well as **many other useful tools** set up for an optimized system management.

**The alarm qualification is automatic:** the alarms & video clips are forwarded to the Monitoring station.

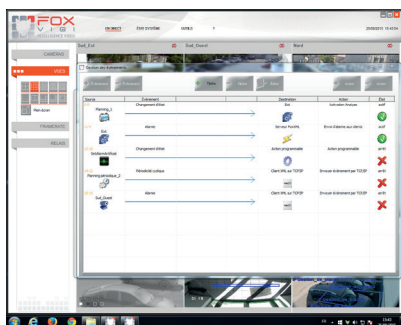
## FoxVigi: differentiators

### ➤ A custom-made solution

In order to offer a custom-made video analysis solution, FoxVigi holds a smart **«toolbox»**.

**The event manager allows the creation of tasks:** it associates actions to events (from FoxVigi or outside). For instance:

- configuration to forward alarms & OSD to the VMS, FTP servers, emails, XML protocols, etc.;
- possibility to match the analysis with other sensors;
- management of the analysis' activation (by dry contact, planning, XML protocol, etc.);
- sending reports by email;
- periodic tasks...



### ➤ The parameter assistant tool

In order to get the best from FoxVigi's possibilities, the software includes a **playback functionality where one can modify the set parameters to immediately see the impact on the detected object**.

This functionality represents added value since a sequence can be played back to refine and optimize the analysis (sensitivity, perspective...).



### ➤ VMS Integration

FoxVigi integrates with the architectures of major VMS.

## FoxVigi: add-ons

### ➤ Detection of line crossing, zones and trajectory monitoring

By default, FoxVigi uses one or several areas (configurable at will by the user) for intrusion detection. The event feedback may also depend on the object's direction (or trajectory).



Line crossing



Zone crossing

### ➤ Loitering

It is possible to trigger an alarm corresponding to a "loitering" event when an object is detected and moni-

tored for a set period of time, in a defined zone.

This solution is often used in car parks, building lobbies, etc.

## In a nutshell

- Fast & easy to use & install.
- Very low rate of false alarms.
- Automatic detailed object classification.
- Parameter assistant tool (playback of video clips while changing the settings to view the impact).
- « Toolbox » included, amongst which an event manager for a custom-made task configuration.
- Configurable with add-ons.