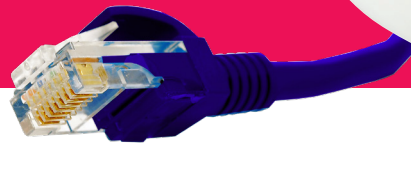


## D-TECT 3 IP

Motion Detector



**The D-TECT 3 IP is an internet protocol connected dual tech detector that combines advanced signal processing and unique optical systems. The detection beam range can be programmed up to 30 metres, avoiding boundary overspill and making it particularly effective for perimeter detection.**

Using Power over Ethernet and IP communication, the D-TECT 3 IP supports direct integration with all the major\* VMS and camera systems on the market, while keeping the installation just as easy as setting up an IP camera.

**Integrations Partners:** Seamless integration with all popular CCTV systems, Video Management Solutions, Smart Home Systems - please contact GJD for more details on your specific requirement.

### FEATURES

- Power over Ethernet
- Advanced signal processing, quad pyro & optical systems
- Direct control of IP cameras
- Web browser interface
- Robust IP65 zinc metal housing
- PIR and microwave detection technologies
- Direct integration with VMS systems

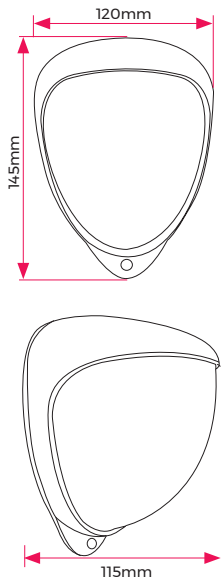
### BENEFITS

- Ability to monitor a large detection area
- Exceptional resistance to false alarms
- Low maintenance & cost efficient
- Suitable for adverse weather conditions
- Easy to setup and service
- Remote IP setup and diagnostics

### PRODUCT CODES

<b>GJD260</b>	D-TECT 3 IP 10.587GHz Silver <b>uk</b>
<b>GJD260D</b>	D-TECT 3 IP 10.587GHz Black/Dark
<b>GJD261</b>	D-TECT 3 IP 10.525GHz
<b>GJD262</b>	D-TECT 3 IP 9.9GHz
<b>GJD263</b>	D-TECT 3 IP 9.35GHz
<b>GJD264</b>	D-TECT 3 IP 10.41GHz

SPECIFICATIONS



- Range**  
Up to 30m programmable
- Coverage**  
10° - 70° detection angle, 30m x 30m max
- Adjustment**  
180° pan + 90° tilt, with visual pan & tilt alignment markers
- Mounting Height**  
Optimum 3m
- Fresnel Lens**  
12 zones for each pyro pair
- Customised Optics**  
Double silicon shielded quad element eliminates 50,000 Lux of white light
- Network Alarms**  
User configurable HTTP web requests, XML and raw TCP socket support. Direct integration for all major VMS software
- Outputs**  
2 x volt-free, silent solid state magnetically immune, programmable trigger options

- Power Supply**  
Power over Ethernet (48V DC)
- Power Consumption**  
Max 3.8W, PoE class 1
- Ethernet Standard**  
Ethernet IEEE 802.3af, TCP/IP
- User Interface**  
Web browser user interface. No software or installation needed
- Pulse Count**  
1,2,3
- Walk Test**  
Output test mode with LED indication
- Operating Temp**  
-20°C to +55°C conformally coated electronics for increased stability
- Temp. Compensation**  
Digital sensitivity adjustment
- Timer Options**  
Up to 120 seconds

- Light Sensing**  
Dusk (2 Lux) to 24 hour
- Housing**  
High impact zinc alloy
- Protection Rating**  
Minimum IP65
- Dimensions**  
145 x 120 x 115mm
- Weight**  
692g
- Accessories**  
GJD304 Conduit adaptor  
PMB1 Pole Mount Bracket  
GJD308 D-Guard  
GJD380 Walk tester

APPLICATIONS

Residential  
Commercial  
Government  
Industrial  
Transportation  
Military Bases  
Heritage

