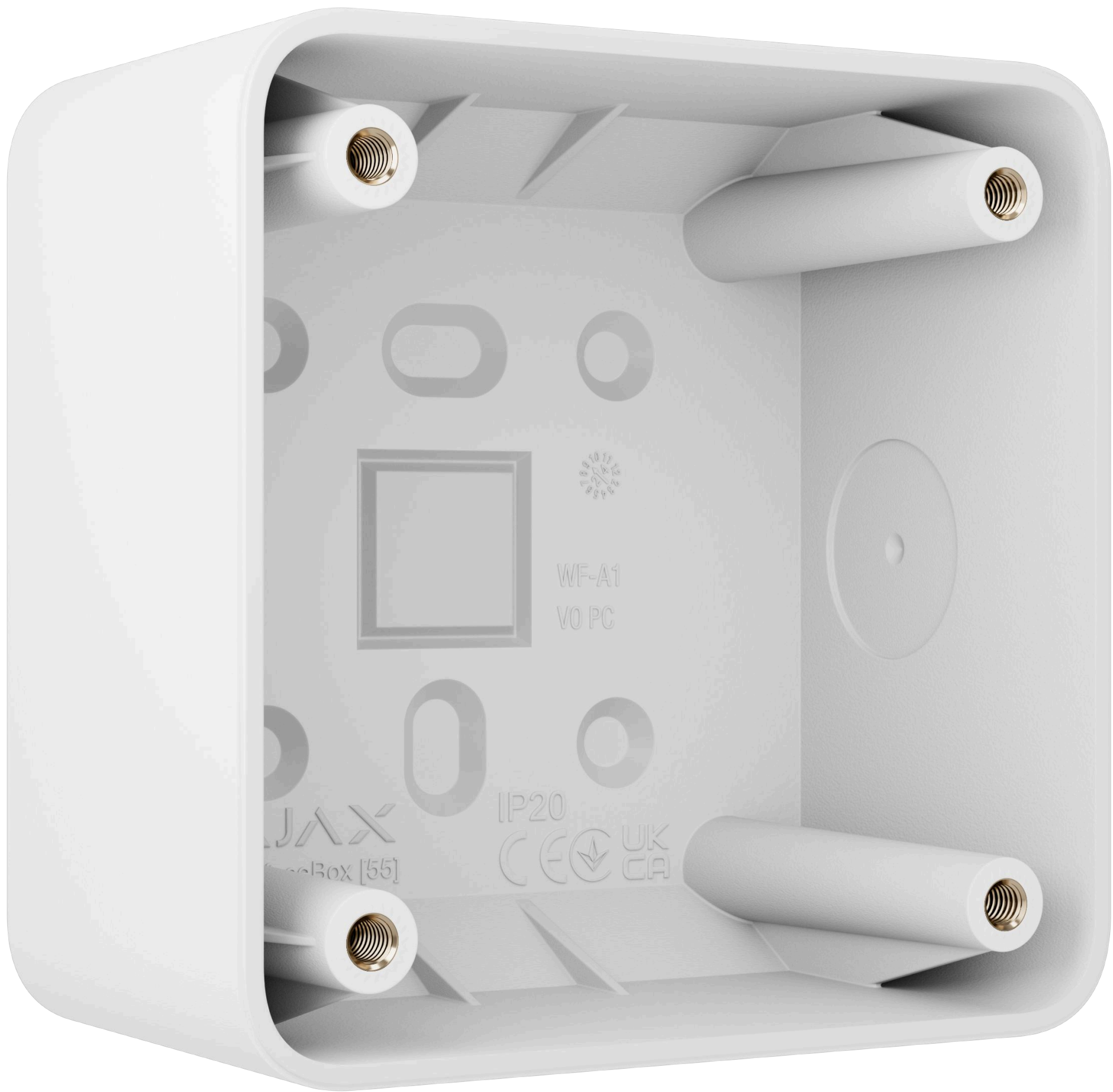


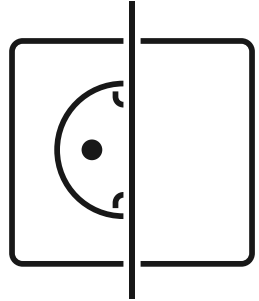
Baseline product line

# SurfaceBox [55]

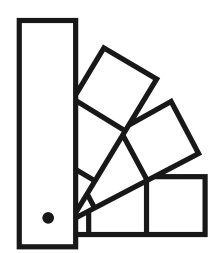
Surface mounting box  
for one LightSwitch or Outlet device



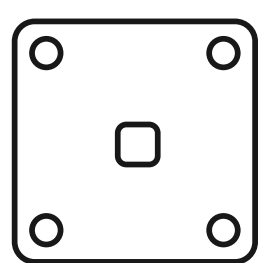
SurfaceBox [55] is designed for surface mounting of Ajax light switches and outlets when it is difficult or impractical to embed devices directly in the wall. The box perfectly matches the color and shape of LightSwitch and Outlet devices, creating a coherent look that complements any interior.



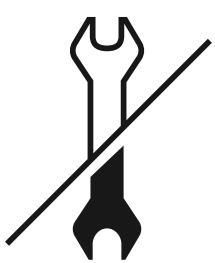
Compatible with all Ajax light switches and outlets<sup>1</sup>



Compact design identical to the LightSwitch and Outlet eight-color palette<sup>2</sup>



Suitable for installation on various surfaces

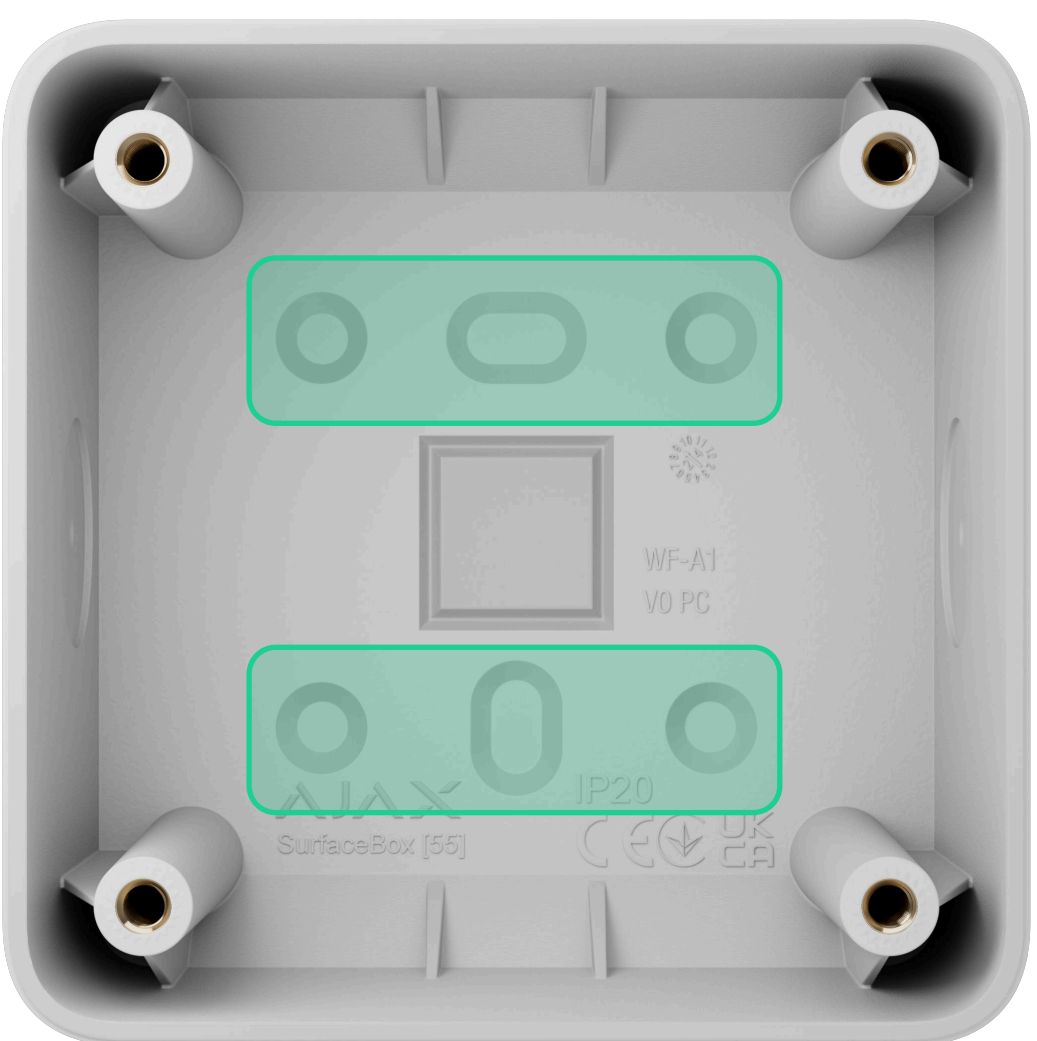
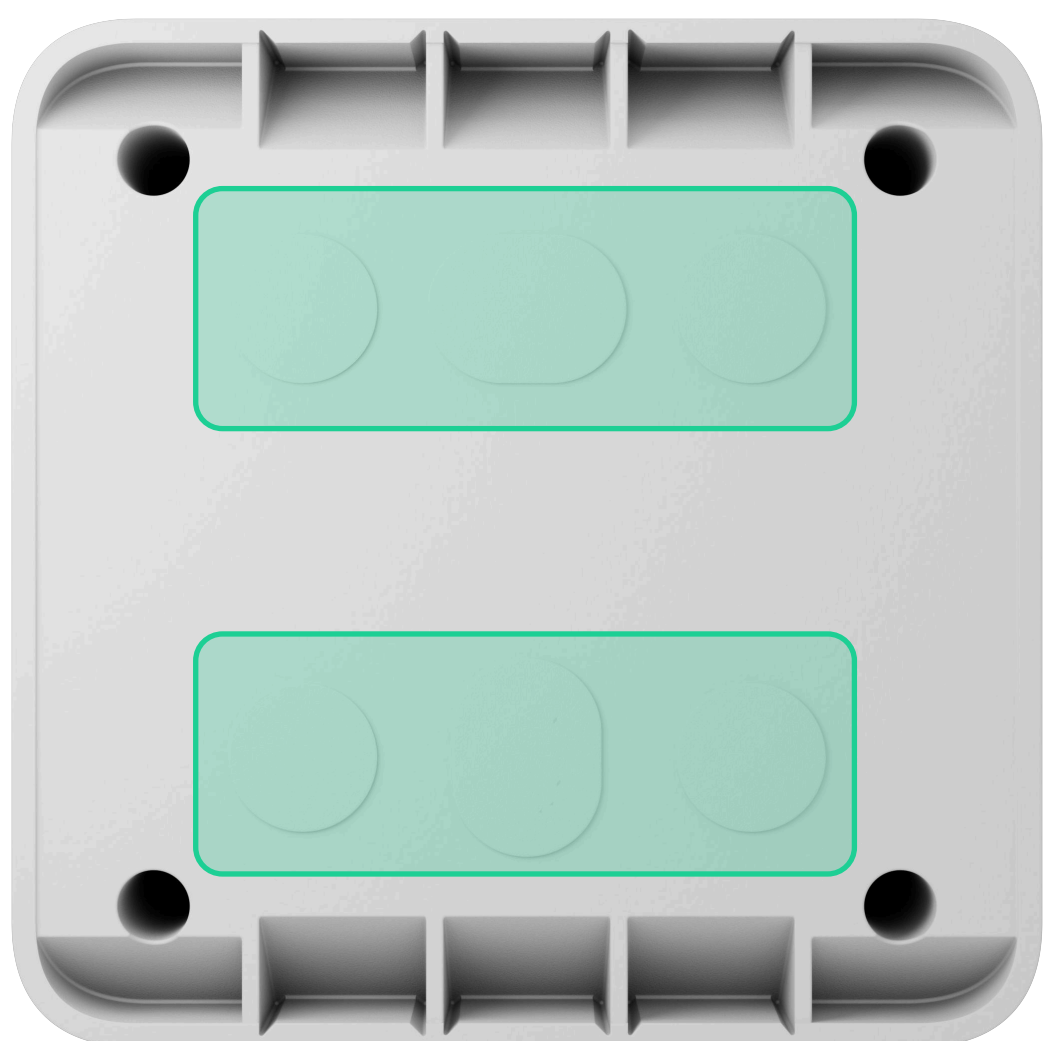


Effortless mounting with no need for in-wall installation

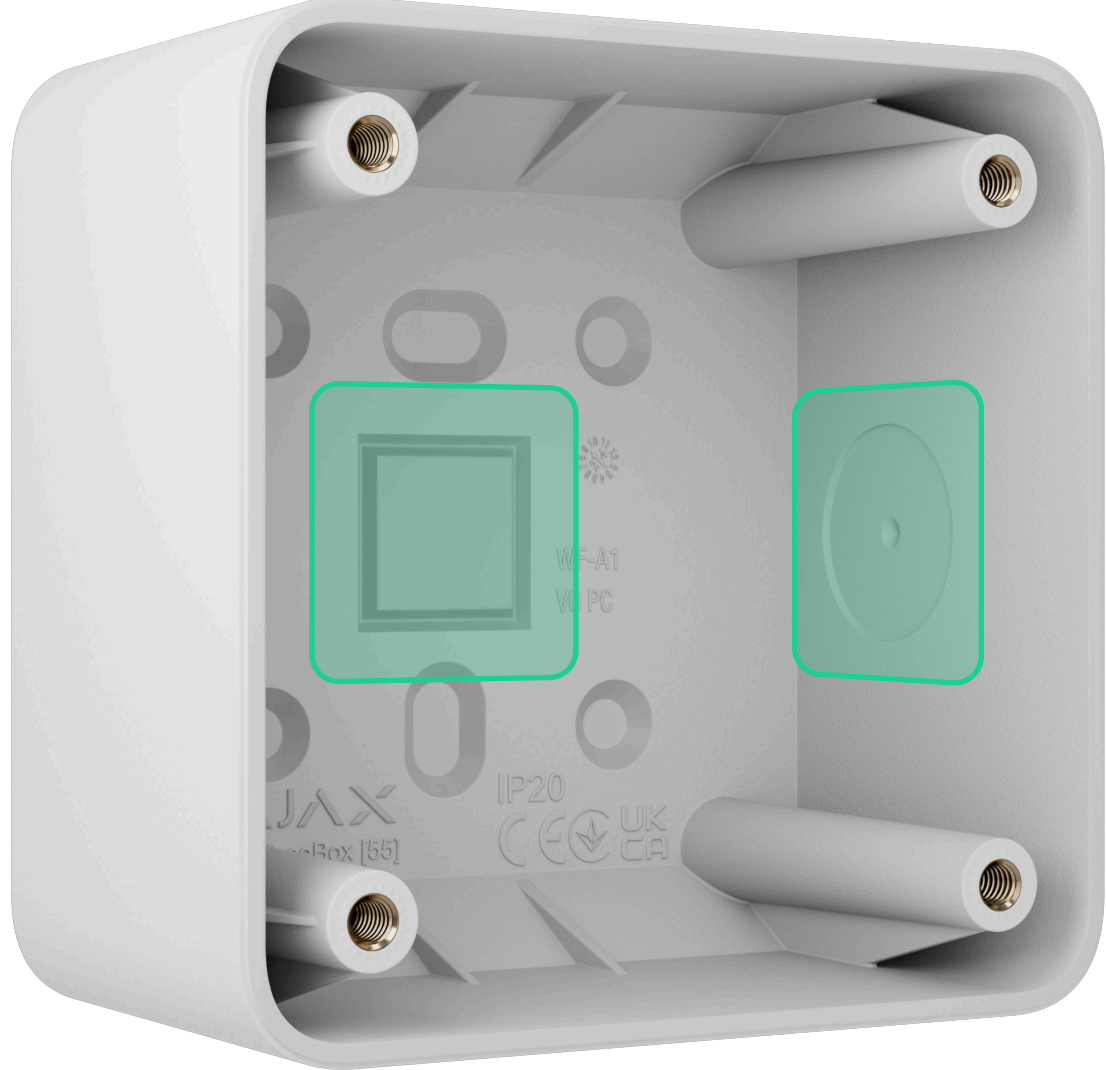
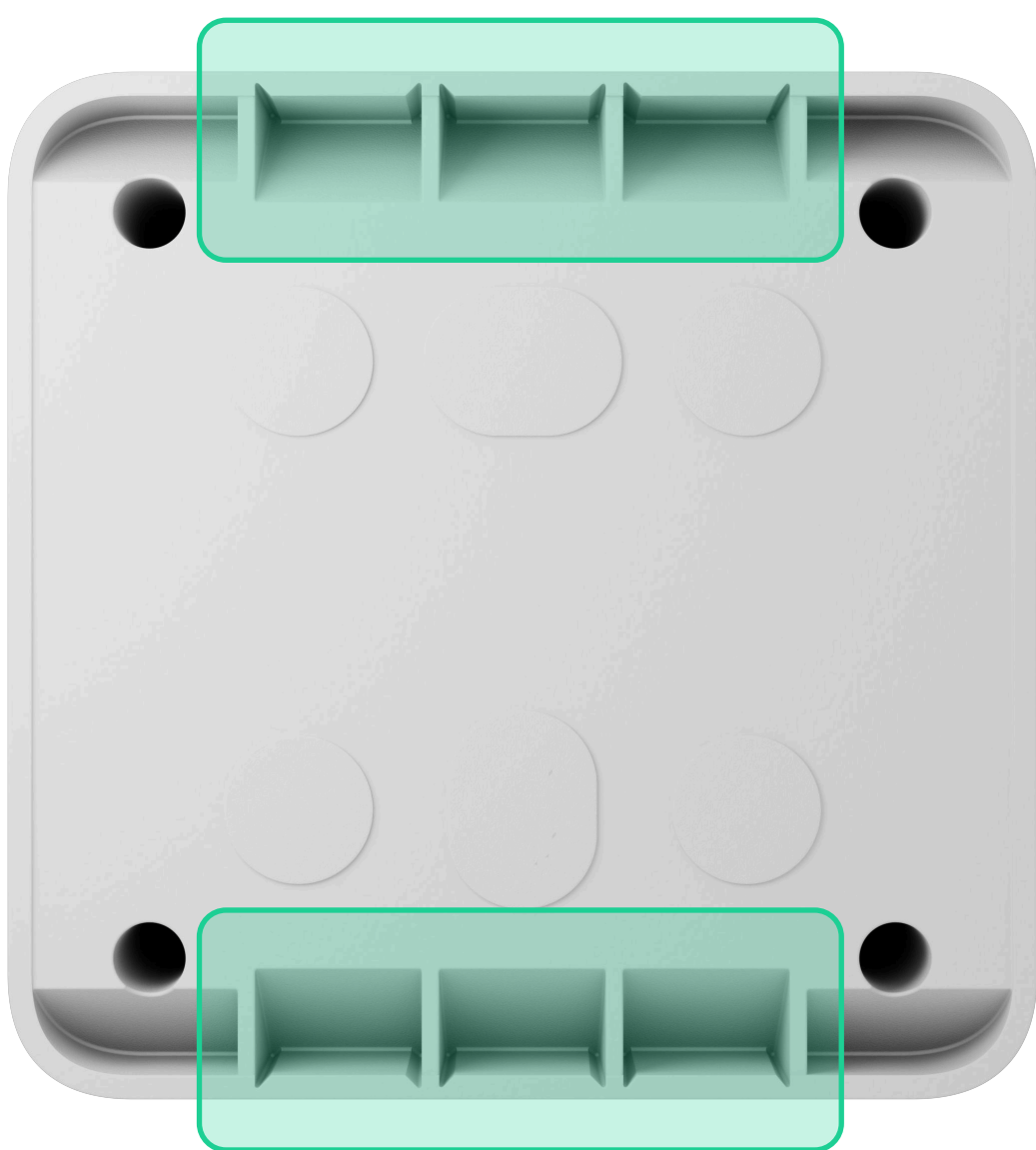


## Versatile installation with prepared fixing points

For wall mounting



For wiring







SurfaceBox [55] is sold separately from LightSwitch and Outlet devices.

Compatibility	Enclosure	Complete set
All versions of Ajax light switches and outlets.	<div>Color<sup>2</sup></div> black, white, fog, grey, graphite, ivory, oyster, olive <div>Dimensions</div> 82.6 × 82.6 × 46.8 mm <div>Weight</div> 63.5 g	SurfaceBox [55] Four holding screws for LightSwitch and Outlet devices Quick start guide

<sup>1</sup> One SurfaceBox [55] can accommodate only one LightSwitch or Outlet device.  
<sup>2</sup> SurfaceBox [55] is currently available for order only in white. Other colors will be added in future releases.



For detailed information, scan the QR code or follow the link:  
[ajax.systems/support/devices/surfacebox-55](https://ajax.systems/support/devices/surfacebox-55)



support@ajax.systems



@AjaxSystemsSupport\_Bot



ajax.systems