



PC MANAGER

Administrator Guide

About This Manual

Thank you for reading this manual. This manual is intended for the administrators who need to properly manage the PC Manager, which is a tool incorporating configuration management, LAN-based device AutoP provisioning, upgrade, etc. This manual applies to PC Manager with the software version 1.1.0.6. Please visit consult our technical support for any new information or the latest software version.

Note

- Informative information and advice for the efficient use of the device.

Warning

- Always abide by this information in order to prevent the person from injury.

Caution

- Always abide by this information in order to prevent damage to the device.

Related Documentation

You are advised to refer to the related documents for more technical information via the link below:

<https://knowledge.akuvox.com>

Table of Contents

1. PC Manager Overview	1
2. PC Manager Installation	2
2.1. Installation Requirements	2
2.2. Install PC Manager	2
3. Login	6
4. Front Stage Management	8
4.1. Dashboard (Front Stage)	8
4.2. AutoP	9
4.2.1. Selective AutoP	9
4.2.2. Pool AutoP	12
4.2.3. Delete Configuration Item	16
4.3. Upgrade	17
5. Data Backup	19
6. Back Stage Management	20
6.1. Back Stage Login	20
6.2. Dashboard (Back Stage)	21
6.3. Node Management	21
6.4. Group Management	23
6.5. Add Configuration Item to Group	24
6.6. Edit/Delete Group Configuration Item	27
6.7. Upload Pool AutoP Configuration	29
7. Data Backup	31
8. Contact Us	34

1. PC Manager Overview

PC manager serves as a LAN-based on-premise platform designed to manage the configurations and conduct AutoP provisioning to the devices deployed on a LAN network etc, at one stop.

PC Manager will help you to:

- Create, delete, and edit the configuration items.
- Synchronize the configurations individually or in batch to the devices
- Upgrade the devices.
- Customize the node and group-based configuration on the offstage to better suit your applications.

2. PC Manager Installation

2.1. Installation Requirements

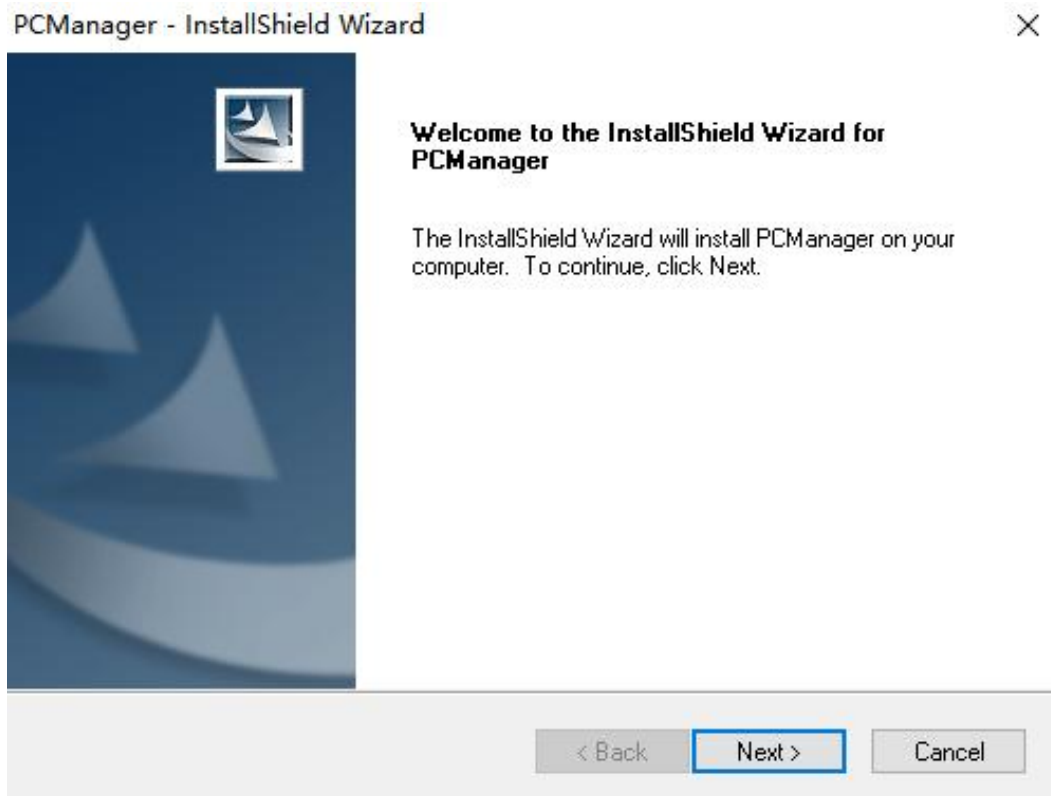
Prior to the installation of the PC Manager, you are required to make sure that the following installation requirements are met:

- Windows 7 operating system (64 bits) or above.
- Only one PC Manager is allowed in the same LAN (Local area network).
- No SDMC, ACMS, and Facepro software turned on on your personal computer or on other personal computers in the same network.
- The Firewall on your computer should be turned off unless 8503-UDP port is added to your firewall inbound and outbound.
- Anti-virus software should be turned off unless 8503-UDP port is added to your firewall inbound and outbound.
- Only one network adapter can be turned on your PC.

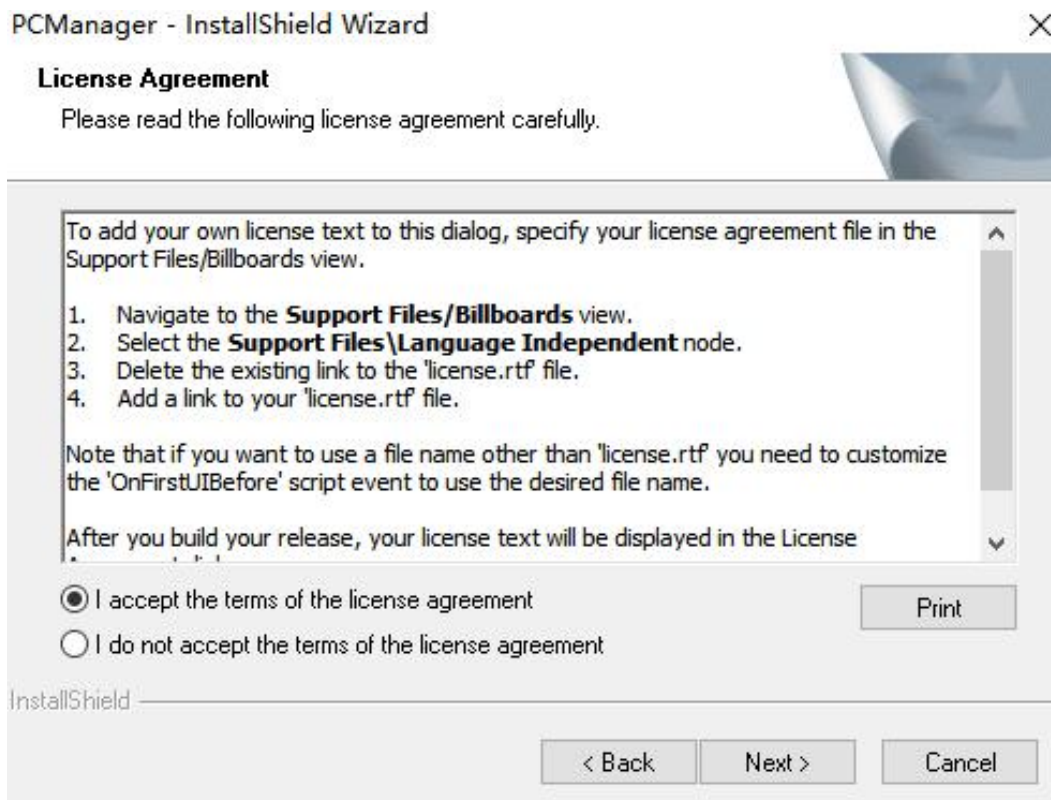
2.2. Install PC Manager

Steps to install PC Manager:

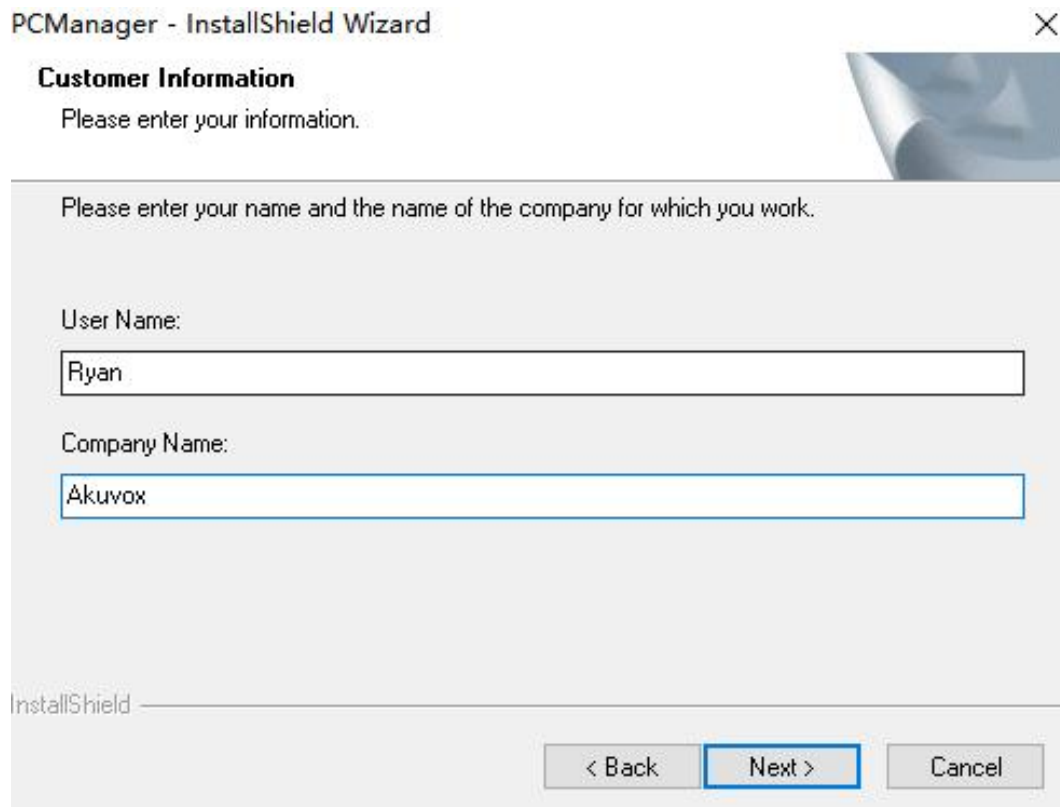
1. Decompress the PC Managerzip file.
2. Click the setup.exe file.
3. Click **"NEXT"** in the pop-out window to continue the installation.



4. Click to accept the terms and Click **Next** to accept the agreement.



5. Enter your user name and company name.

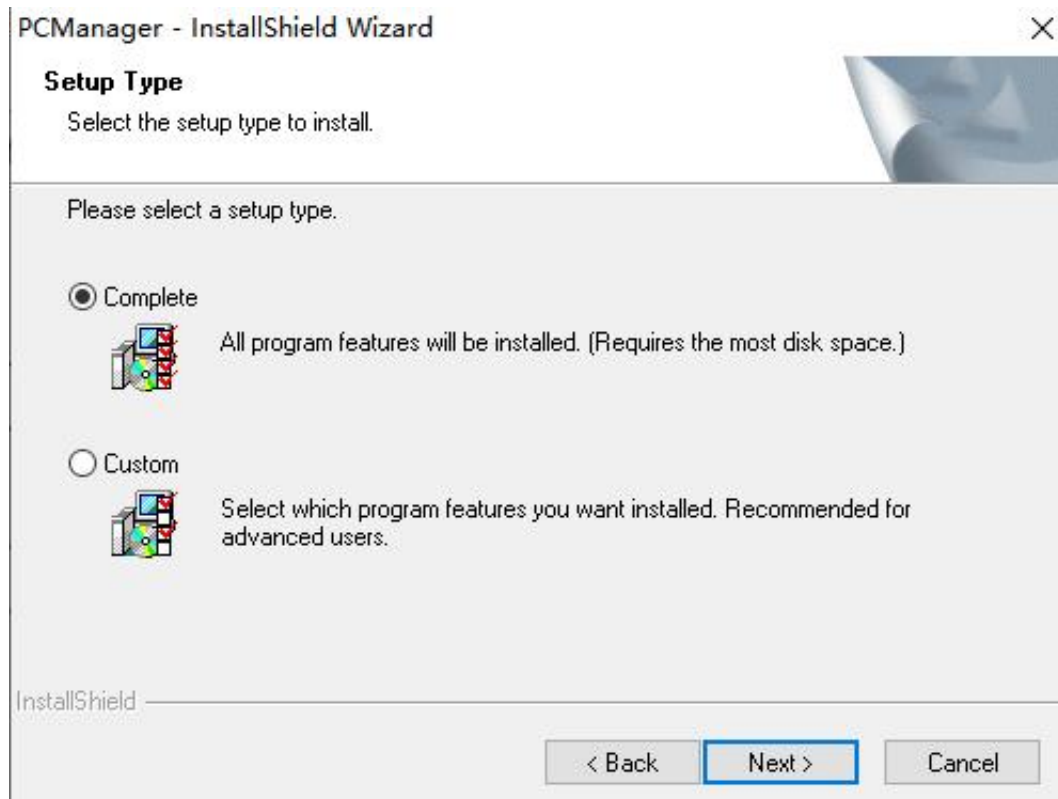


6. Select the **Complete** or **Custom** installation to your liking and click **"Next"**.

- Select "Complete" if you want to install the software to the default path on your PC.
- Select "Custom" if you want to install the software to the place you want on your PC.


Note

- The PC Manager installation path should not contain any Chinese characters.

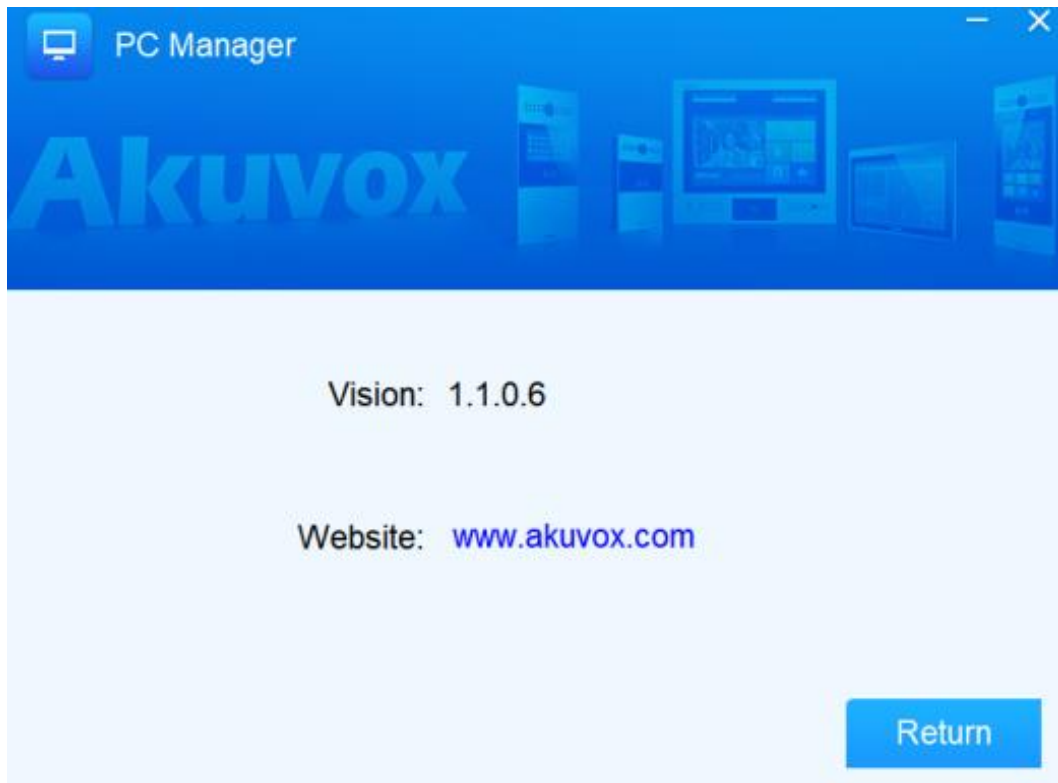


7. Click "**Install**" to finish the installation.

3. Login

Enter the username and passwords, which are both “**admin**”. On the upper right corner of the login interface, click  if you want to check the software version, then click **Return** to go back to the login interface.



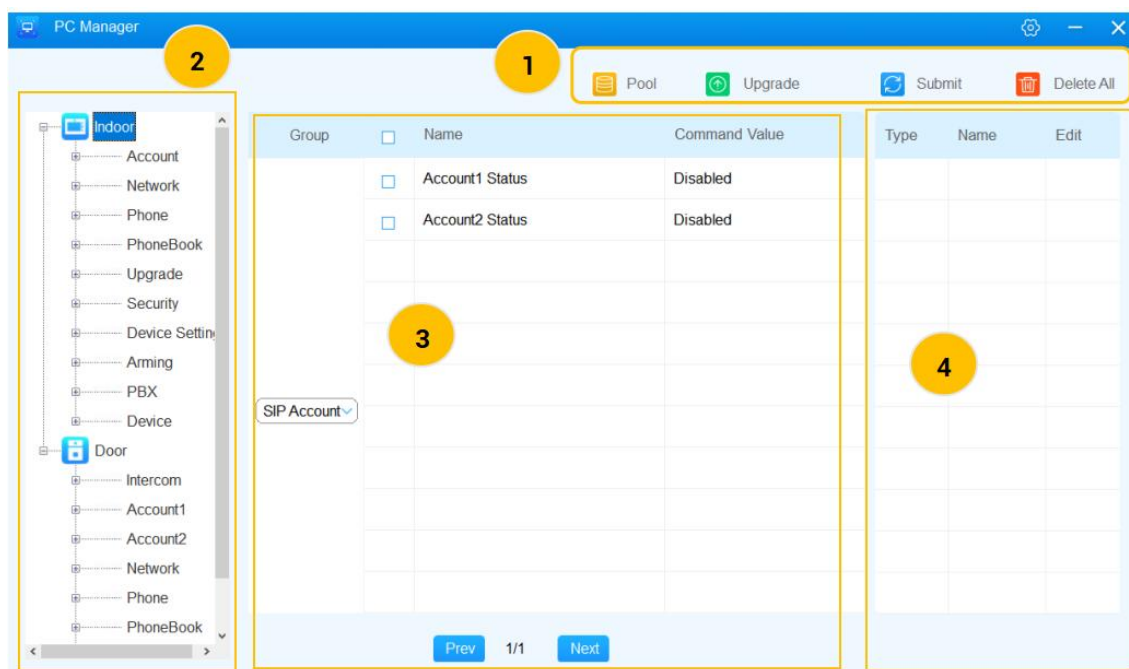
**Note**

- Currently, login usernames and passwords are not changeable.





4. Front Stage Management

PC manager front stage allows you to provide Autop provisioning to the devices and to upgrade the devices on the same LAN network.

4.1. Dashboard (Front Stage)



● Dashboard Description

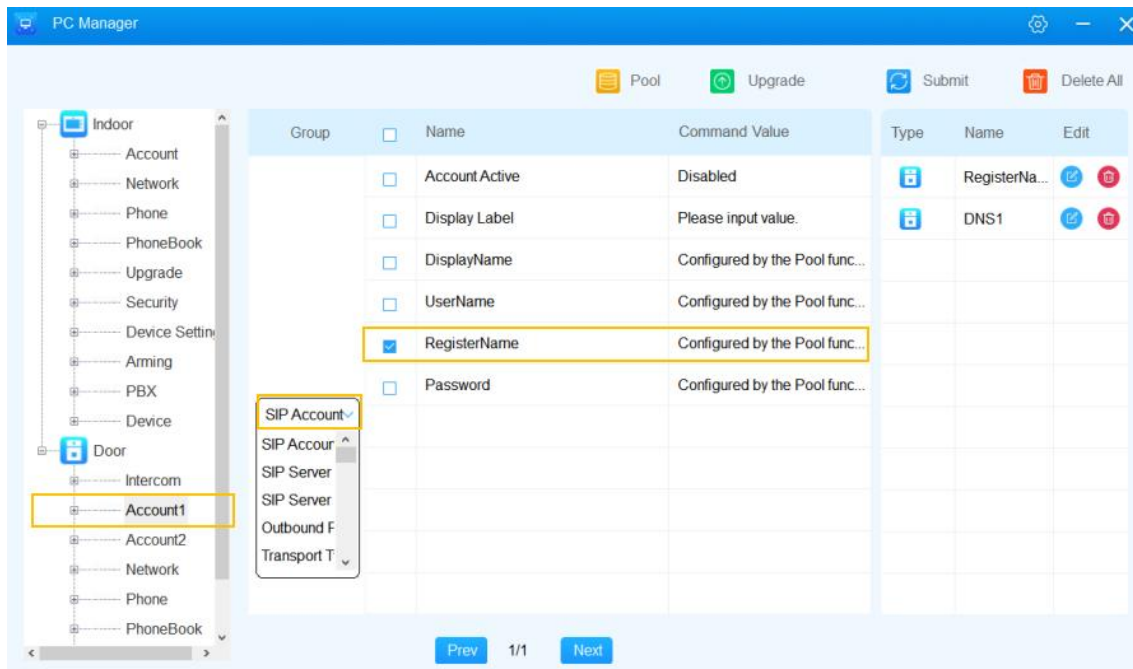
No.	Area Name	Icon	Description
1	Function Area		Pool. Used to prepare a fixed set of configurations, for example, DNS, IP address configuration for efficient batch provisioning.
			Upgrade: used to upgrade the selected device.
			Submit: used to synchronize the configuration to the selected device.
			Delete: used to delete the selected configuration item.
2	Node Area	N/A	Node Area: used to set up your tree nodes to organize your configuration and navigation.
3	Configuration Area	N/A	Used to select and edit the configuration on the the group basis
4	Sync Area	N/A	Used to edit or removed the configurations pending for the synchronization.

4.2. AutoP

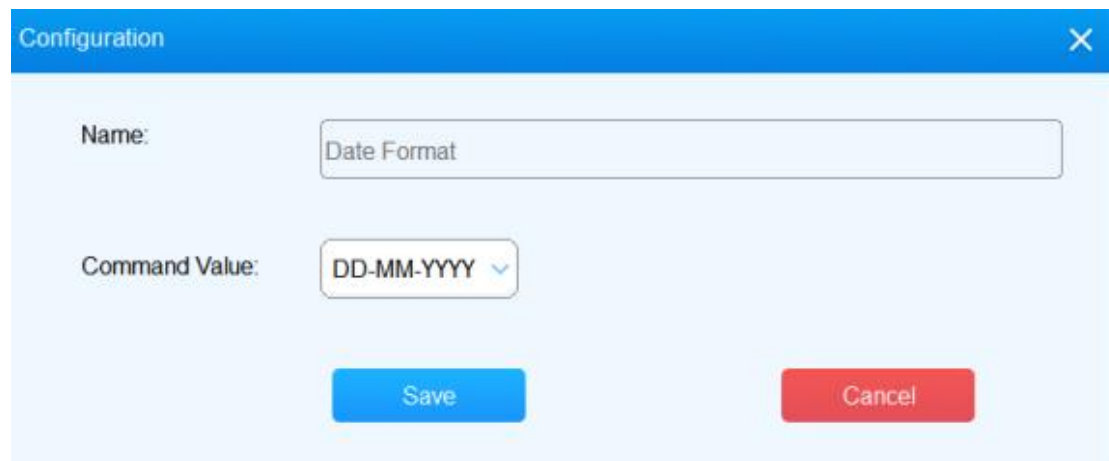
AutoP is divided into selective AutoP provisioning and Pool provisioning (where the configurations are pulled from the configuration reservoir).

4.2.1. Selective AutoP

Selective AutoP allows you to synchronize all the selected configuration items to the devices for the multiple types of device provisioning. You can select the configurations for the different device types and synchronize them to the targeted devices at one time.





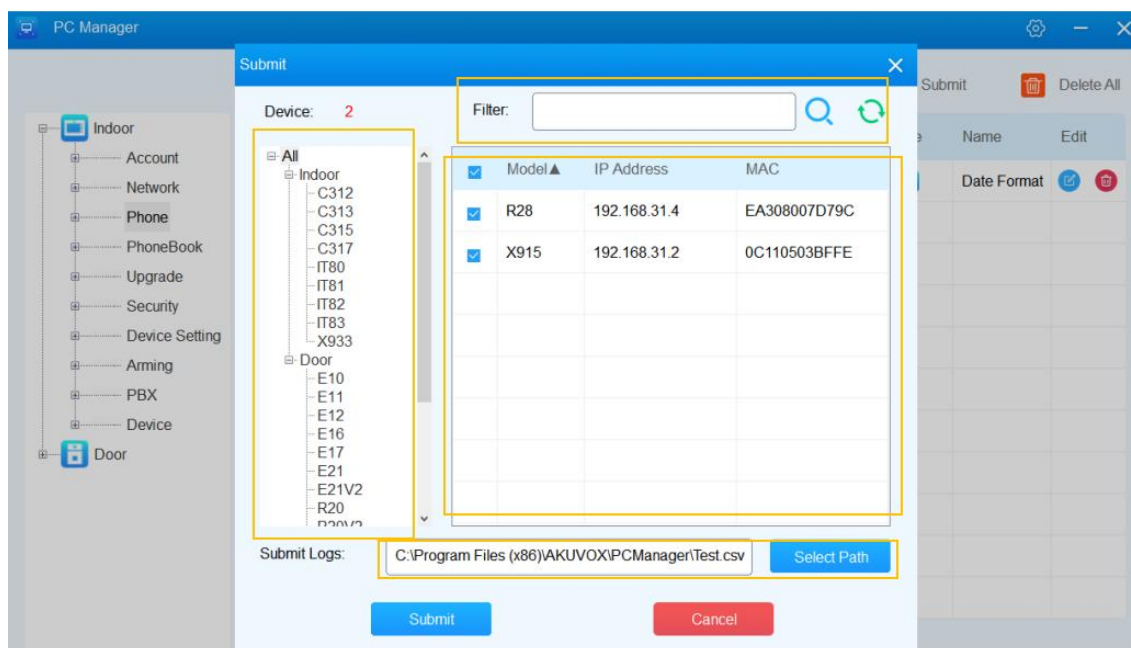
1. On the tree node, select your device type, and navigate to your targeted **node > group > configuration** item.
2. Select and edit the configuration.
 - If it is a selection type, click **"Command value"** of the selected configuration, and select the specific configuration value. For example, select between "Enabled" and "Disabled" etc.
 - If it is Input type, click "Command value" of the selected configuration and fill in the configuration value, for example, fill in the Display label name.
 - If it is Pool type, you will need to set up a fixed set of configurations in the pool module first for the batch provisioning. The pool-type configuration is indicated by the "Configured by Pool function". The pool-type configuration will be explained in chapter **6.2. Pool Autop**.
3. When any configurations are selected, it will go to Sync area automatically, where you can remove or further edit the configuration as needed. For example, change the date. See the example below:



Configuration dialog box with the following fields and buttons:

- Name:** Text field containing "Date Format".
- Command Value:** Dropdown menu showing "DD-MM-YYYY".
- Buttons:** "Save" (blue) and "Cancel" (red).

- On the upper right corner, click **Submit icon** , and you will see a list of devices automatically searched by the PC manager. Click  to refresh the device list as needed.



- Select the device you want to synchronize the configuration to.
 - Select the device directly from the list.
 - Select the device from the tree node on the left side if needed.
 - Filter and select the device if needed.

6. Click **Select Path** to save the sync data on the selected path on your PC, then click **Submit** to execute the provisioning. After the submission, it will display "Exporting Succeeded". The submit log is obligatory.

Note

- The device type you selected must be consistent with the devices in the list otherwise it displays "No Configuration item selected".

● Submit Log Sample:

	A	B	C	D	E	F	G
1	ID	IP	MAC	MODEL			
2	1	192.168.31.13	0C1105060414	R29			
3							
4							

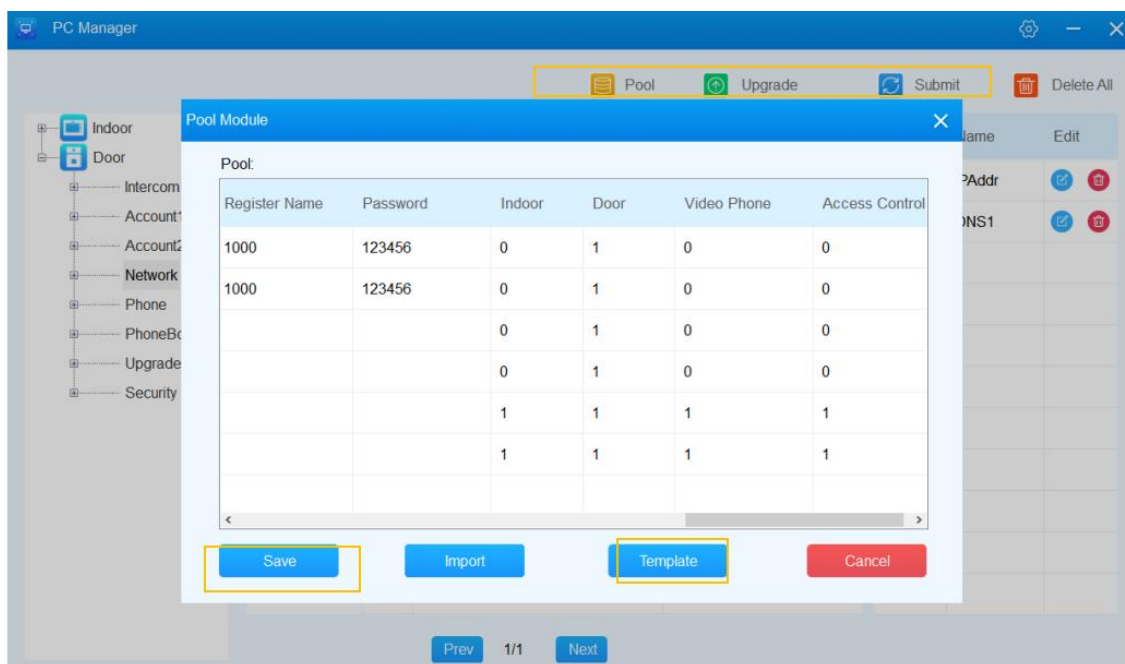
● Description:

No.	Column Name	Description
1	Group	Allows you to select the specific configuration group.
2	Name	Allows you to select specific configuration item.
3	Command Value	Allows you to select or edit the selected configuration items.

4.2.2. Pool AutoP

When you want to perform basic AutoP provisioning to a large number of devices at the same time in a project, you can use Pool AutoP. It allows you to configure a fixed set of frequently used configuration items, then uploads them to a configuration reservoir where you can pull out the configuration before synchronizing them to the targeted devices.

1. Near the top of the interface, Click **Pool icon**. A pop-out window for the pool module is displayed.



- Click Template to download the configuration template to your PC, populate the needed configurations on the template, then set up synchronization filtering values "0" or "1" for the four types of devices. Only the device type populated with "1" is valid for the synchronization, while "0" is not. And "1" and "0" are also related to the order of device synchronization, which will be explained in the following steps.

Note


- The pool configuration template must be filled in before you can proceed with the pool-type device provisioning.

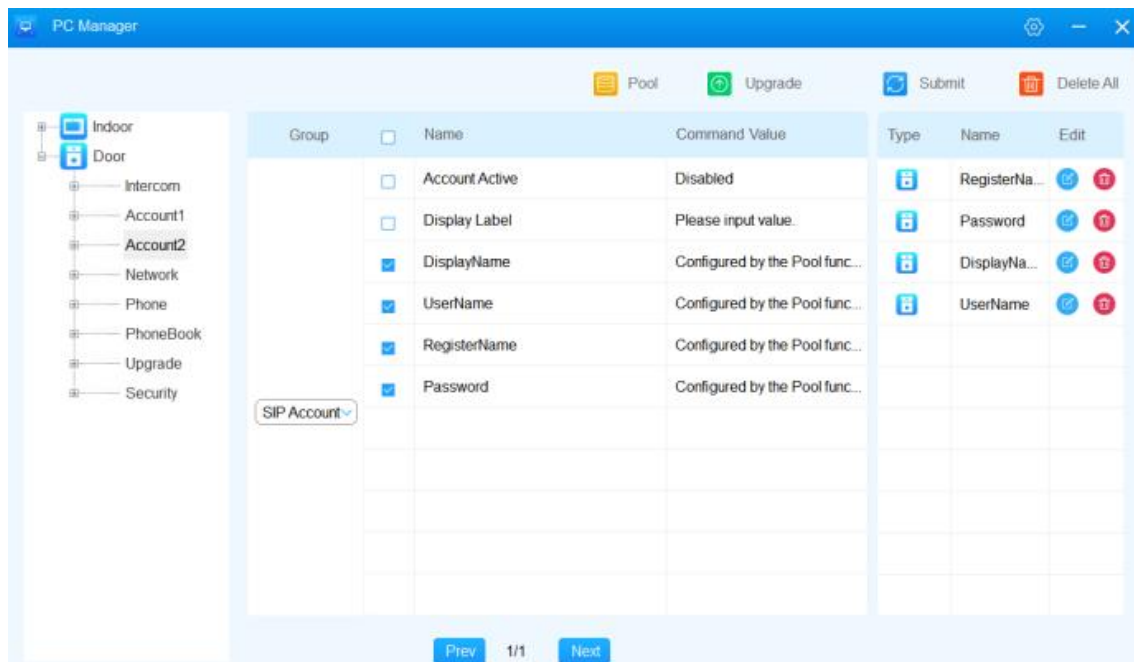
Note

- The pool configurations include IP Address, Subnet Mask, Default Gateway, DNS1/2, VLAN ID, VLAN Priority, Display Name, User Name, Display Label, Register Name, Password, Indoor, Door, Video, and Access Control.

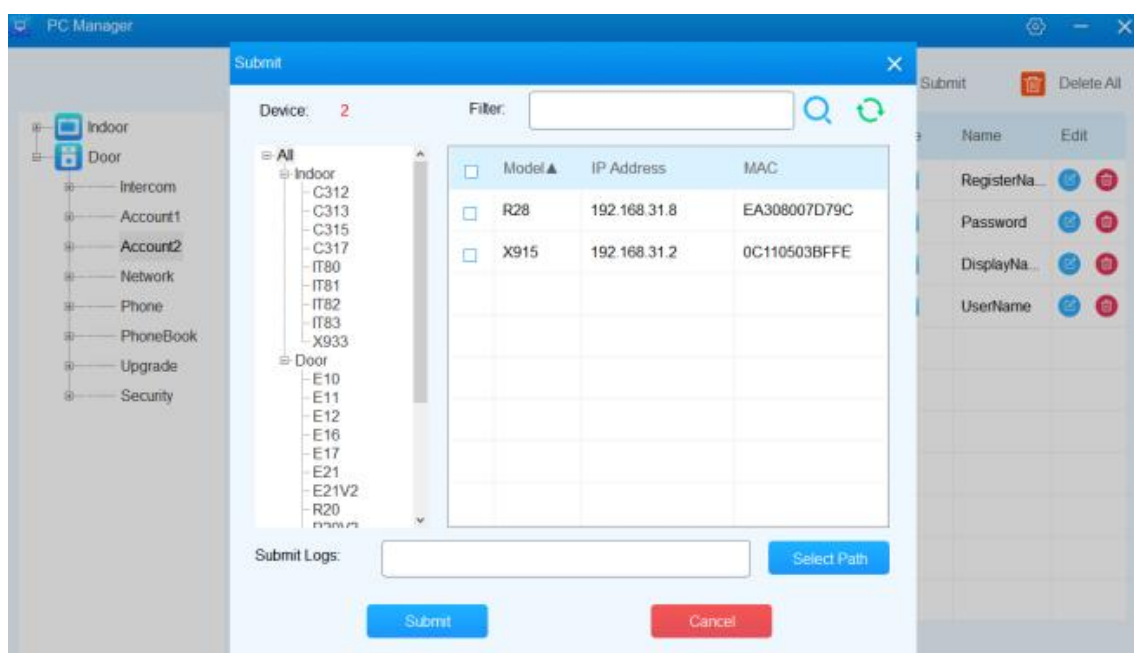
Configuration template:

ID	IPAddr	SubnetMask	Gateway	DNS1	DNS2	VlanId	VlanPriority	Display Name	User Name	Display Label	Register Name	Password	Indoor	Door	Video	Access Control
1	192.168.21.100	255.255.255.0	192.168.17.1	218.95.152.99	218.95.152.100	1	1	1	1	1000	1000	123456	0	1	0	0
2	192.168.21.101	255.255.255.0	192.168.17.2	218.95.152.99	218.95.152.100	2	2	2	2	2000	2000	123456	0	1	0	0
3	192.168.21.102	255.255.255.0	192.168.17.3	218.95.152.99	218.95.152.100	3	3	3	3	3000	3000	123456	0	1	0	0

- After the template is completed, click  to upload the template to the pool module, where you can click on the specific configuration to further edit the uploaded configurations if needed, then click Save to save it to the pool module.
- Starting from three nodes, navigate to the targeted node, group, then select the pool type configuration you need.



- Click . A pop-out window will be displayed.



6. Select the specific devices you want to synchronize the configurations in the pool module. Tick off the checkbox of the device to decide the device synchronization order.

The 'Submit' dialog box displays the following information:

- Device:** 2
- Filter:** (empty search box)
- Device List (Left):**
 - All
 - Indoor
 - C312
 - C313
 - C315
 - C317
 - IT80
 - IT81
 - IT82
 - IT83
 - X933
 - Door
 - E10
 - E11
 - E12
 - E16
 - E17
 - E21
 - E21V2
 - R20
- Selected Devices Table:**


<input checked="" type="checkbox"/>	Model ▲	IP Address	MAC
<input checked="" type="checkbox"/>	R28	192.168.31.8	EA308007D79C
<input checked="" type="checkbox"/>	X915	192.168.31.2	0C110503BFFE
<input type="checkbox"/>			
<input type="checkbox"/>			
<input type="checkbox"/>			
<input type="checkbox"/>			
<input type="checkbox"/>			
<input type="checkbox"/>			
<input type="checkbox"/>			
<input type="checkbox"/>			
- Submit Logs:** (empty text box)
- Buttons:** Submit, Cancel, Select Path

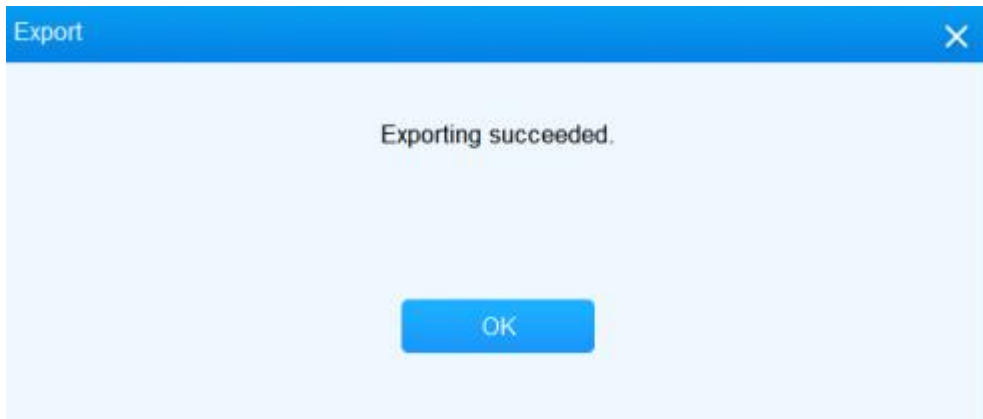
Note

- If the device you ticked off is with "0" device type, then it will go to the next device with "1". For example, if you selected three devices, the first one with "1", the second one with "0", and the third one with "1", then the third one will be ranked second in the synchronization order, while the second one will be ignored.

Note


- It is advised that you select the device for the AutoP in the order you configure the template to avoid the wrong synchronization.

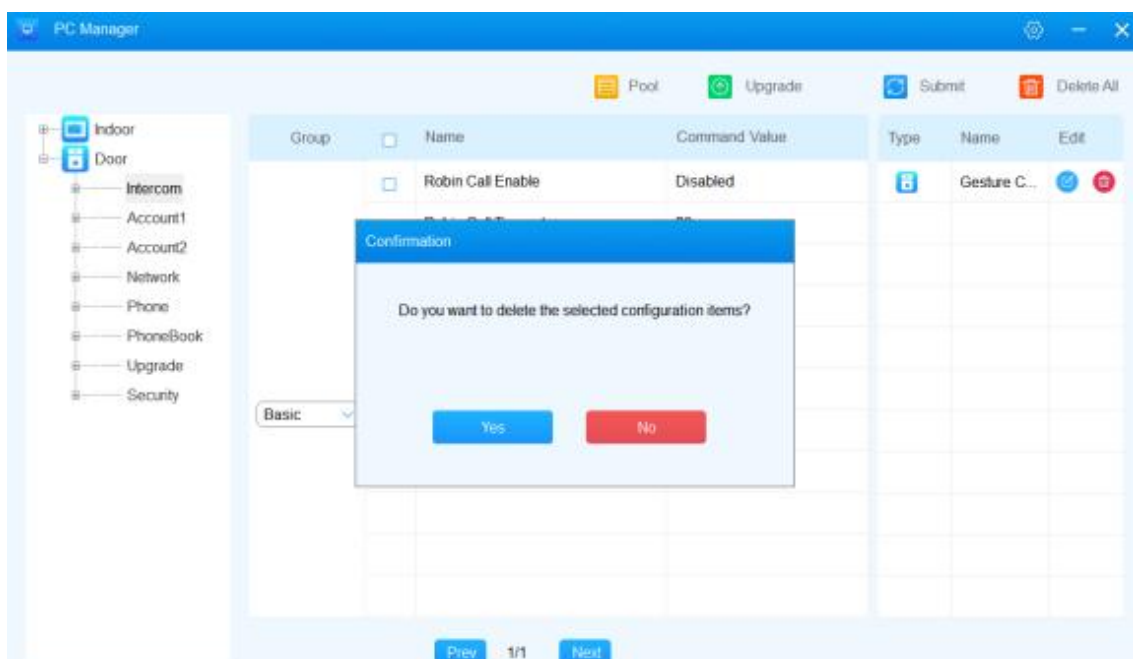
7. Select the path for the submit log on your PC, then click  to execute the AutoP. A prompt "Exporting succeeded" is displayed.



4.2.3. Delete Configuration Item

If there is any configuration items become obsolete or are no longer needed, you can delete them completely to suit your application as needed

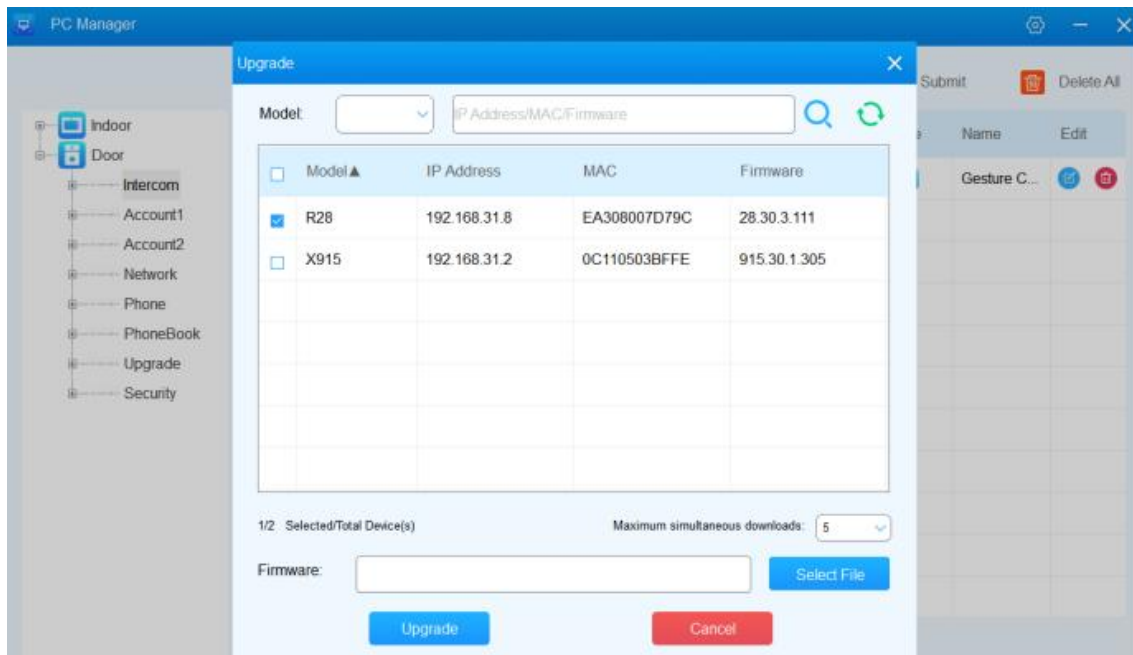
1. Starting from three nodes, navigate to the specific node, and group, then find and select configurations you want to delete.
2. Click  **Delete All** to delete the configuration items selected. A pop-out window will be displayed for confirmation. Click **Yes** for the confirmation.



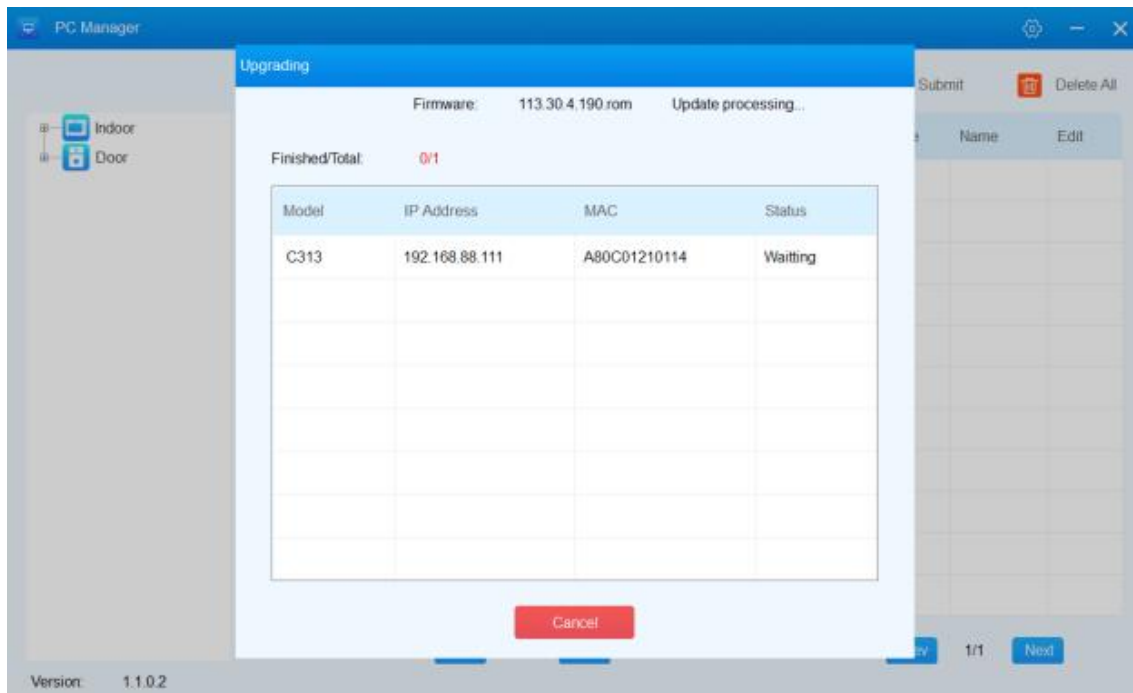
4.3. Upgrade

You can upgrade up to 100 devices of the same model each time, however, it depends on your actual network condition to determine the number of devices to be upgraded each time.

1. Click  Upgrade . A pop-out window for the device upgrade is displayed.




2. Select the maximum number of device upgrade each time ranging from 3 to 100. For example, if you set it as "5", then only five devices can be upgraded each time, and the six devices will be on waiting status.




Note

- The upgrade has five statuses: Waiting, downloading, upgrading, failed, and Succeed.

3. Select the device(s) to be upgraded.


- Find and select the device by device model or search the device in the search field if needed. You can also select ascending or descending display by "Model", "IP Address", "MAC", and "Firmware".
- Select the devices directly from the device list. You click  to refresh the list as needed.

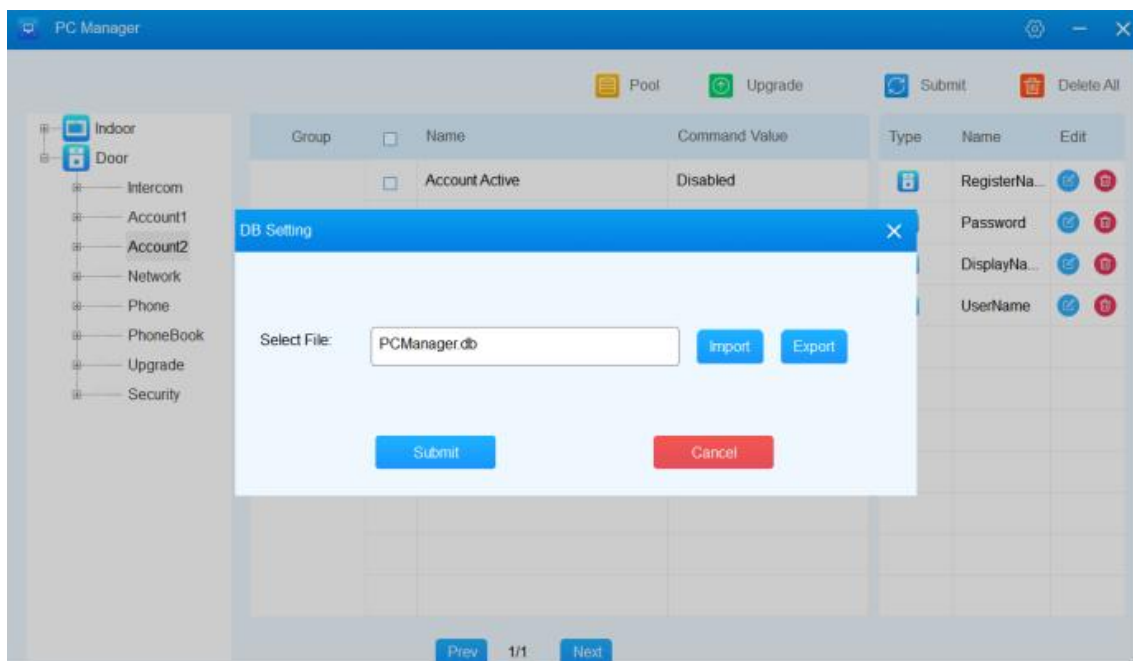
4. Click  to upload the firmware from your PC, then click

.

5. Data Backup


The AutoP data can be exported out as a backup as you might need it later to recover data that has been altered.

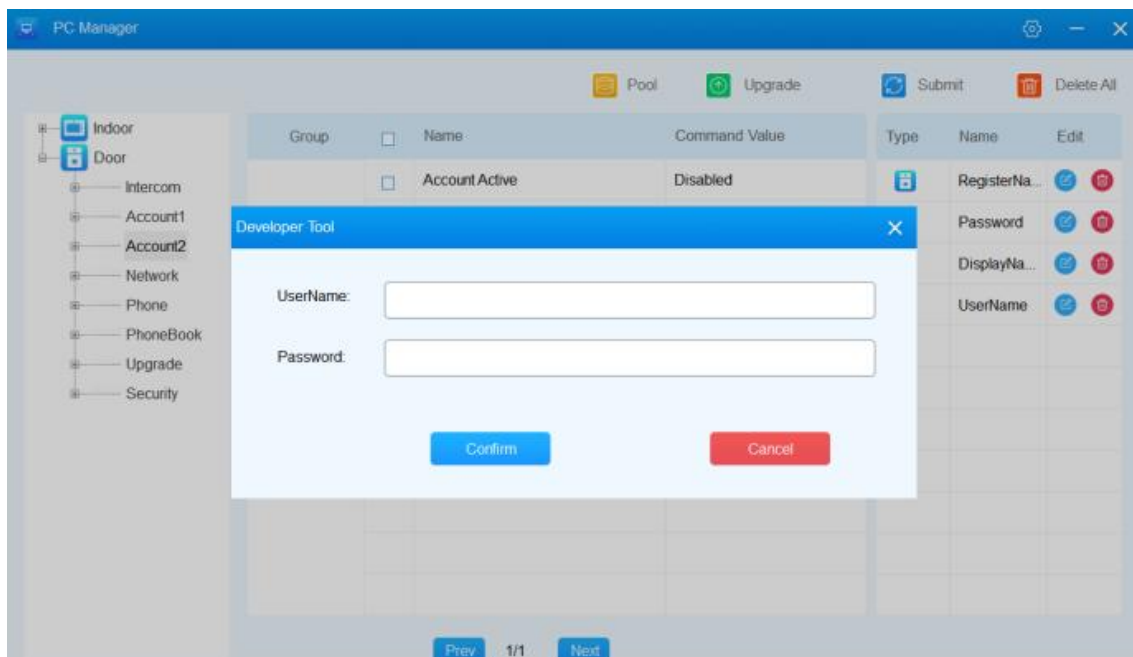
1. On the right upper corner of the interface, click . A pop-out window is displayed.
2. Export and import the data.
 - To export the data as a backup, select the path you want the data to be saved on your PC.
 - To Import the backup data, find and select the data on your PC, then click **Submit**.



6. Back Stage Management

6.1. Back Stage Login

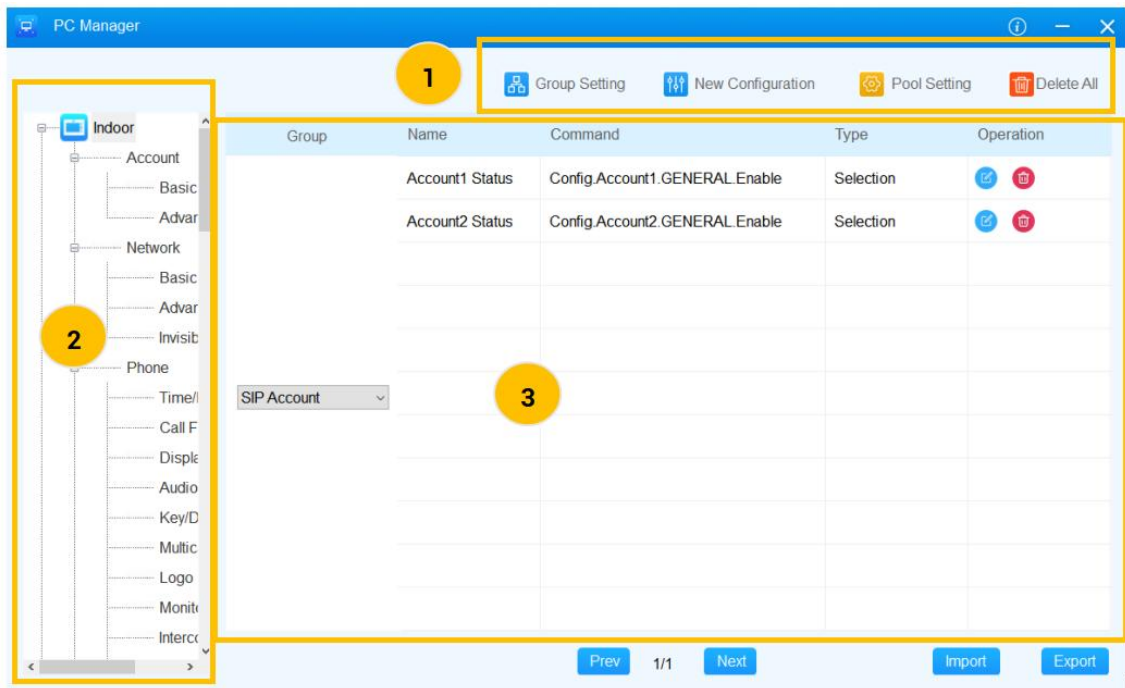
1. On the upper right corner of the interface, keep clicking , and you see a pop-out window.
2. Enter the username and password, which are all "admin".



Note

- Currently, the username and passwords are not changeable.

6.2. Dashboard (Back Stage)



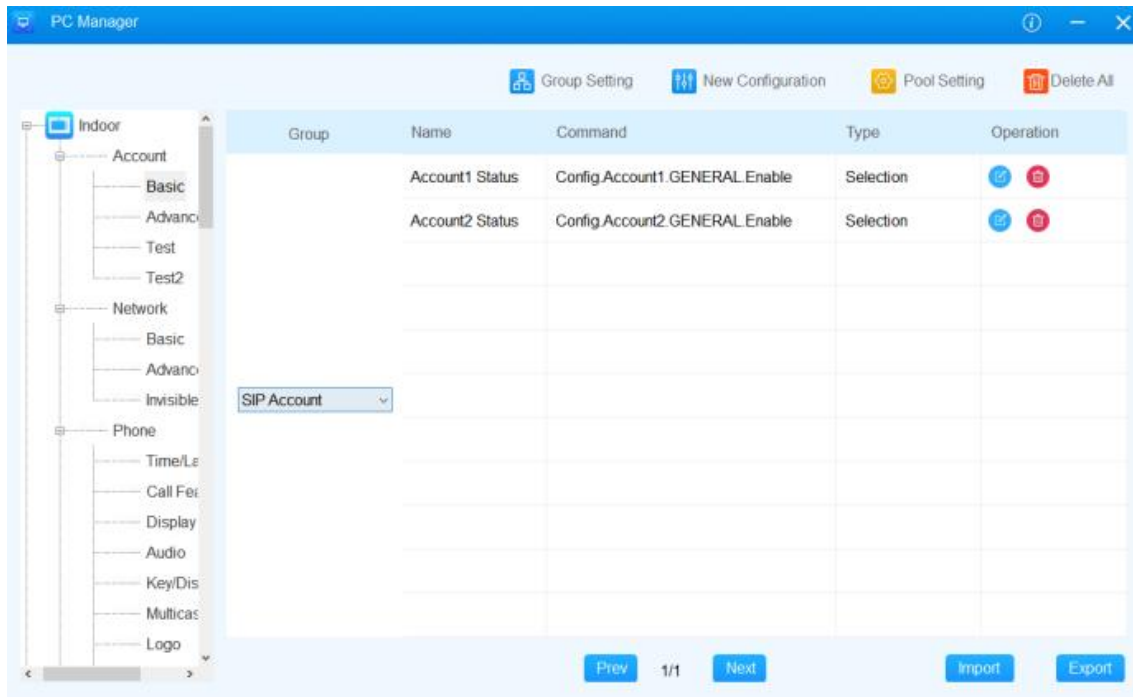
● Dashboard Description:

No.	Area Name	Icon	Description
1	Module area		Used to create, edit, or delete the configuration group.
			Used to create configuration items.
			Used to upload the pool type configuration data using template.
			Used to delete the selected configuration item in a group.
2	Node Area	N/A	Used to add, edit, and delete root nodes and children nodes.
3	Configuration Area	N/A	Use edit, or delete the configuration item.

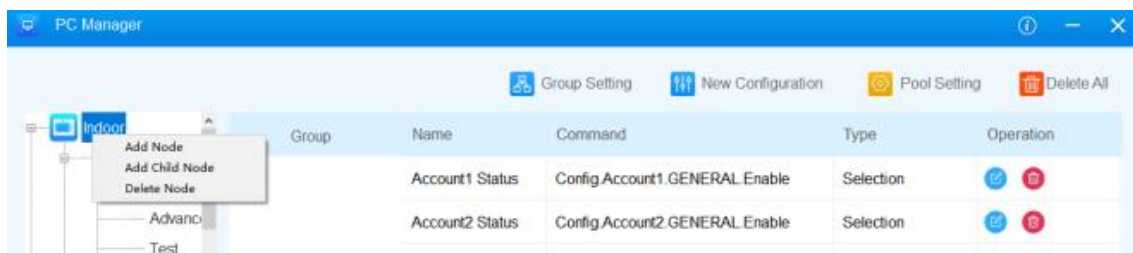
6.3. Node Management

The tree node needs to be managed when you need to add more nodes when the current nodes are not sufficient or to delete the nodes that are no longer needed. Moreover, you can change the node name as needed.

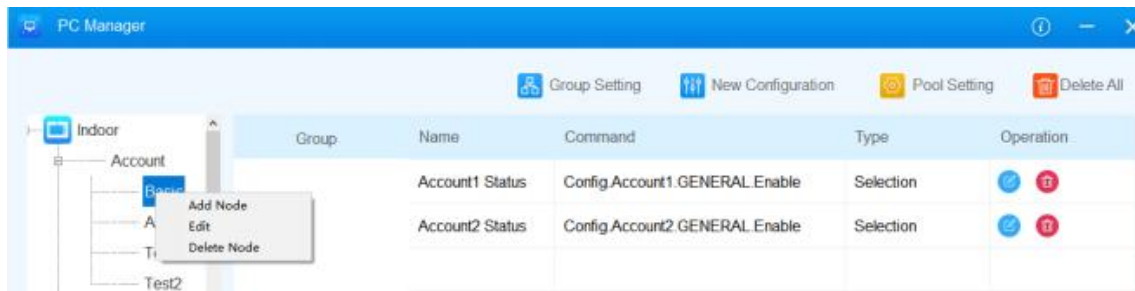
1. On the tree node, add, edit, and delete the nodes as needed.



2. Manage the tree nodes at different levels (three-level maximum).
 - To add, delete, and edit the root node, right-click on the root node. A small window is displayed, and you can select specific actions for your need.



- To add delete, edit the children node, right-click on the second or third level of the children node, then do the same way as you do with the root node.

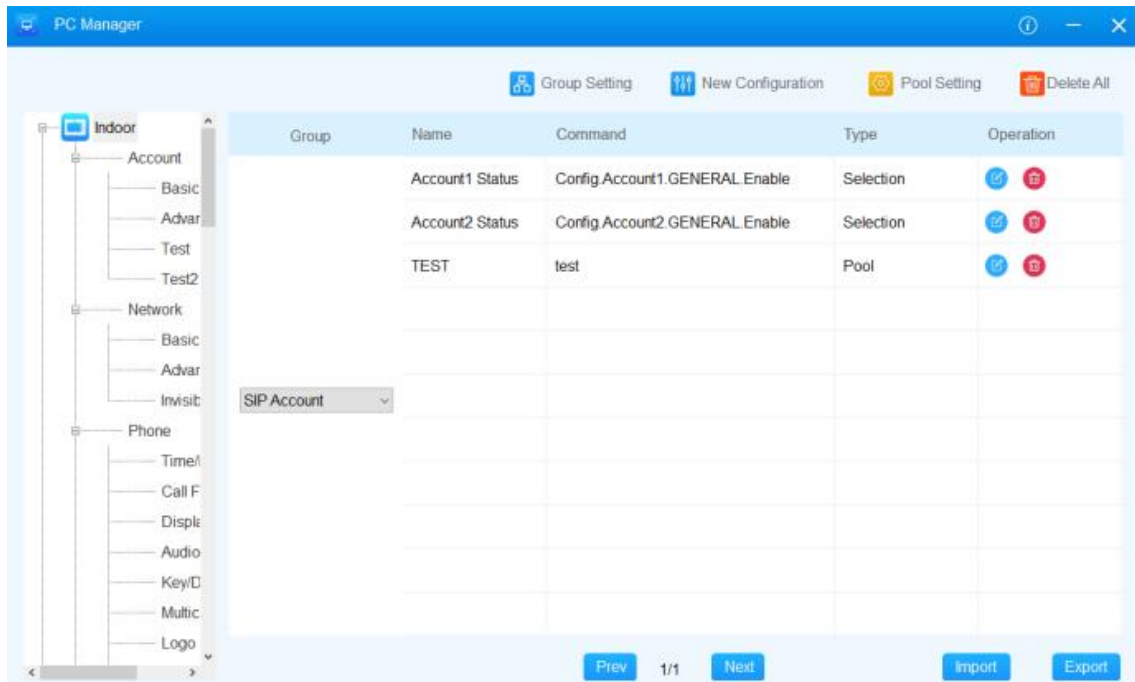


Note

- You can edit and delete the nodes in the same way as you do for the root node.

6.4. Group Management

Configuration groups are what you add to the specific node you created. You can not only add new groups to the selected node but also edit or delete the existing configuration items in the group of the node.

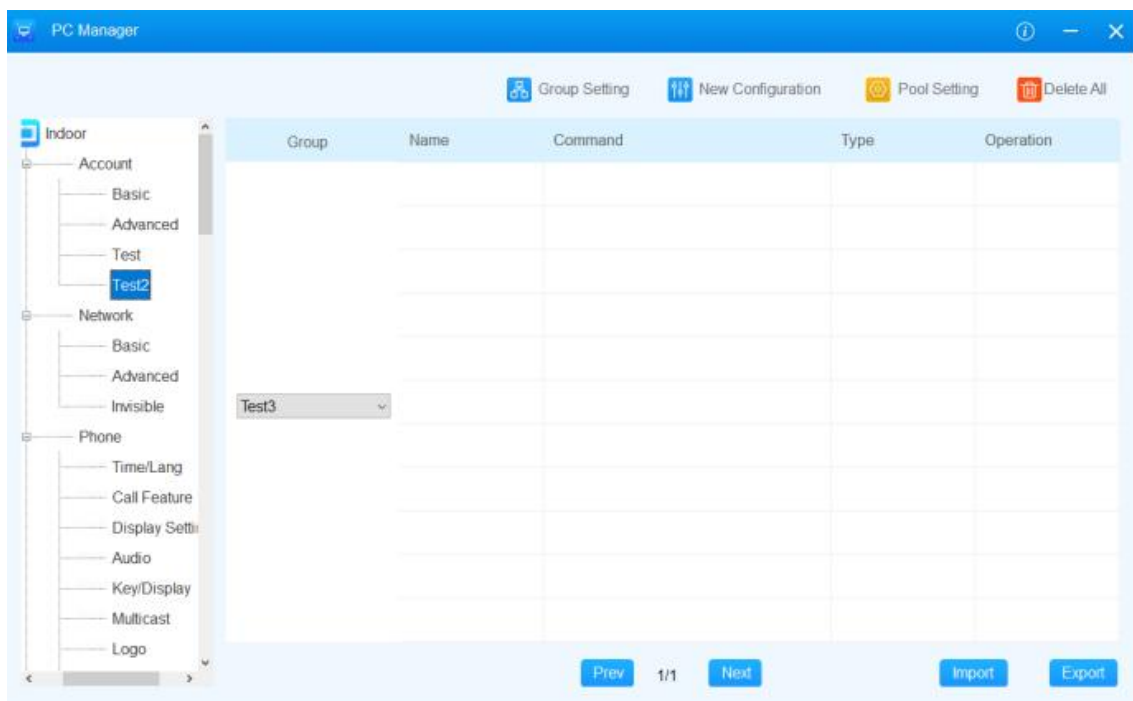


- Description:**

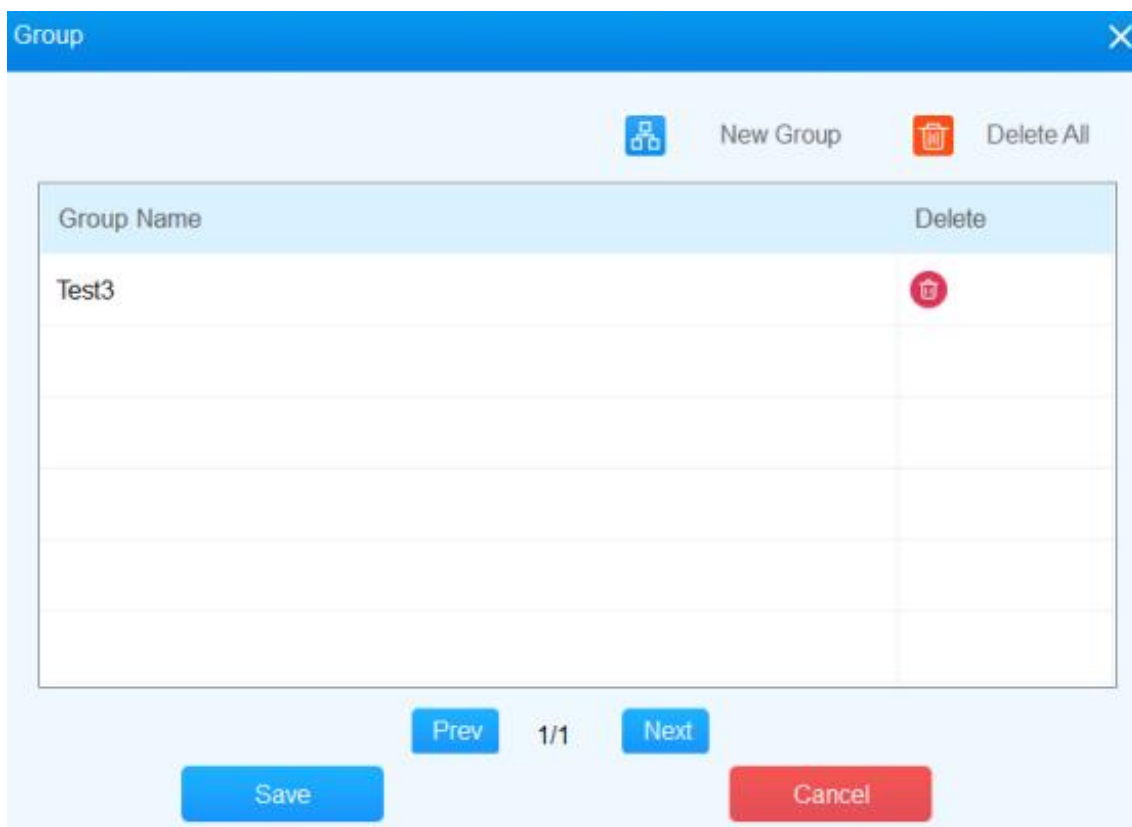
No.	Column Name	Description
1	Group	Used to display and select the configuration group.
2	Name	Display configuration name.
3	Command	Display configuration commands
4	Type	Displays the configuration type.
5	Operation	Used to edit or delete the configurations.

6.5. Add Configuration Item to Group

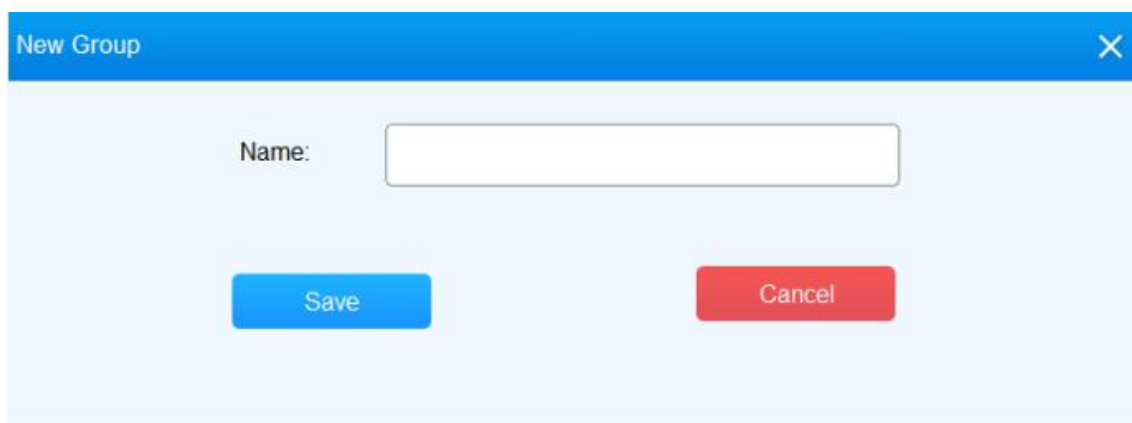
1. On the tree node area, select the specific children node under which you can create configuration groups.




2. Click  **Group Setting**. A pop-out window for creating a group is displayed.



3. Enter the configuration group name.



4. Near the top of the interface, click  **New Configuration**. A pop-out window for configuration is displayed.
5. Set up your configurations, then click **Save**. You can select three types of configurations: selection, Input Pool.

New Configuration

Type: Selection

Display Name:

Tab: Command 1

Command:

Option:

Option	Value	Delete

Description:

Save

Cancel

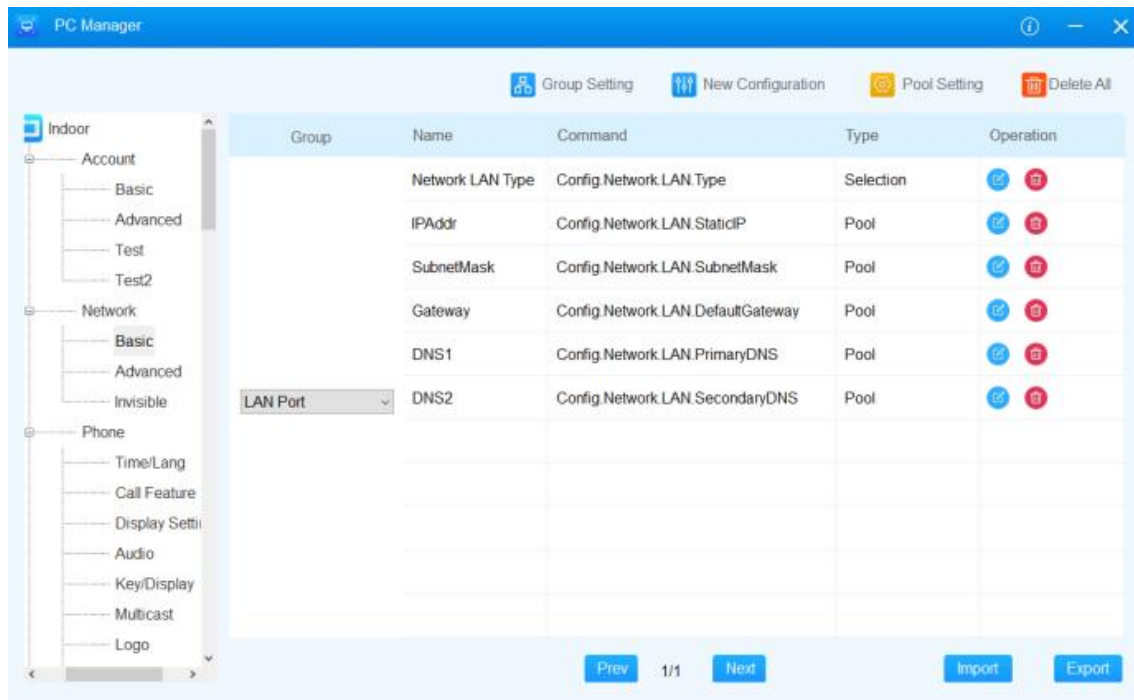
Prev 1/1 Next

● Parameter Set-up:


No.	Field Name	Description
1	Type	<p>Select configuration type:</p> <ul style="list-style-type: none"> ● Selection: for any configuration that is selectable with two or more than options. For example, "Enable" or " Disabled" ● Input: for any configurations that requires you to fill in the configuration value. For example, enter the display label "Ryan" for the Displace Label configuration. ● Pool: for the any configurations that can only be pulled out from the configuration reservoir and be synchronized to the device via a configuration reservoir.
2	Display Name	Fill in the configuration name.
3	Tab	<p>Used to switch between the two configurations with slight variation.</p> <p>Note: Android and Linux-based devices may vary slightly in their Autop command for the same configuration.</p>
4	Command	Enter the Autop command provided by the Akuvox technical team.
5	Option	<p>Option is only for selection type configuration, and you can click "+" to add options.</p> <ul style="list-style-type: none"> ● Option: Fill in the option name for the selection. For example: "Disable" and " Enabled" etc. ● Value: Fill the command value. For example "0" for "Disabled" and "1" for Enabled. ● Delete: used to delete the specific option. ● Note: This has to be done according to the actual Autop command.
6	Description	Enter the description for the configuration.

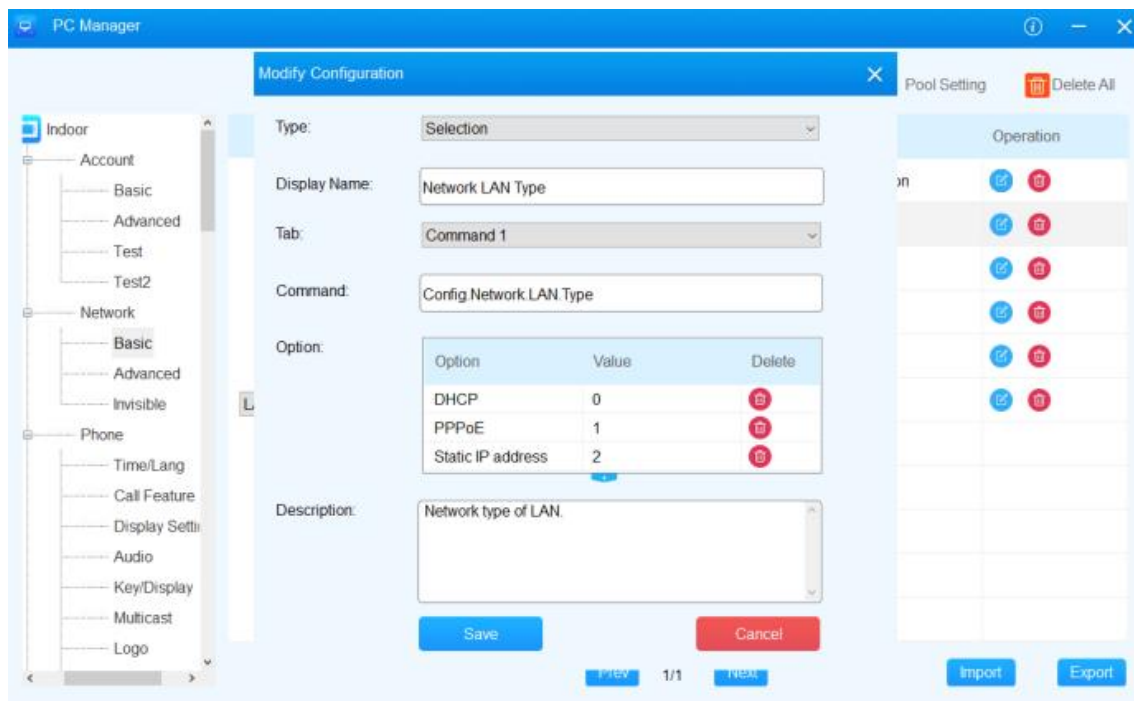
6.6. Edit/Delete Group Configuration Item



1. On the tree node area, select specific root nodes, and specific children nodes.
2. Select the specific configuration group.

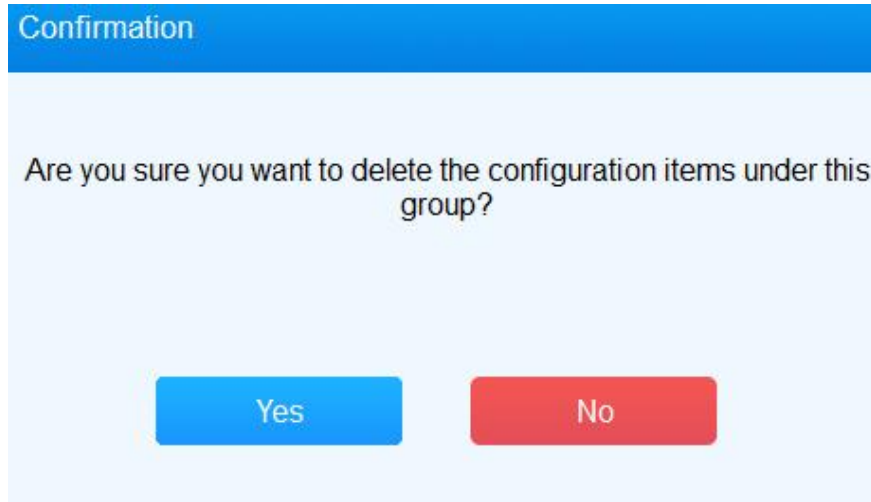


3. Edit or delete the configuration.

- To edit the configuration, click  of the configuration item you want to edit. A pop-out window will be displayed for you to edit the configuration. You can edit it in the same way as you create the configuration.




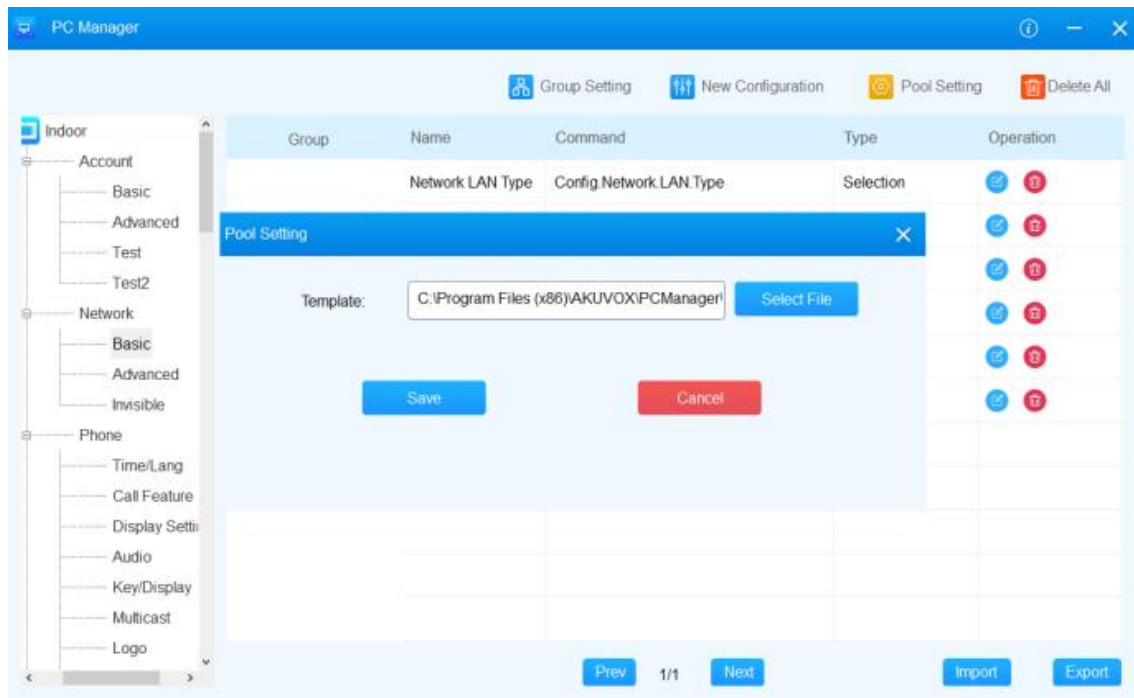
- To delete a specific configuration, click  of the configuration item you want to delete. A pop-out window will be displayed.
- To delete the configurations under a specific group, click  **Delete All** near the top of the interface. A pop-out window is displayed for the confirmation.



6.7. Upload Pool AutoP Configuration

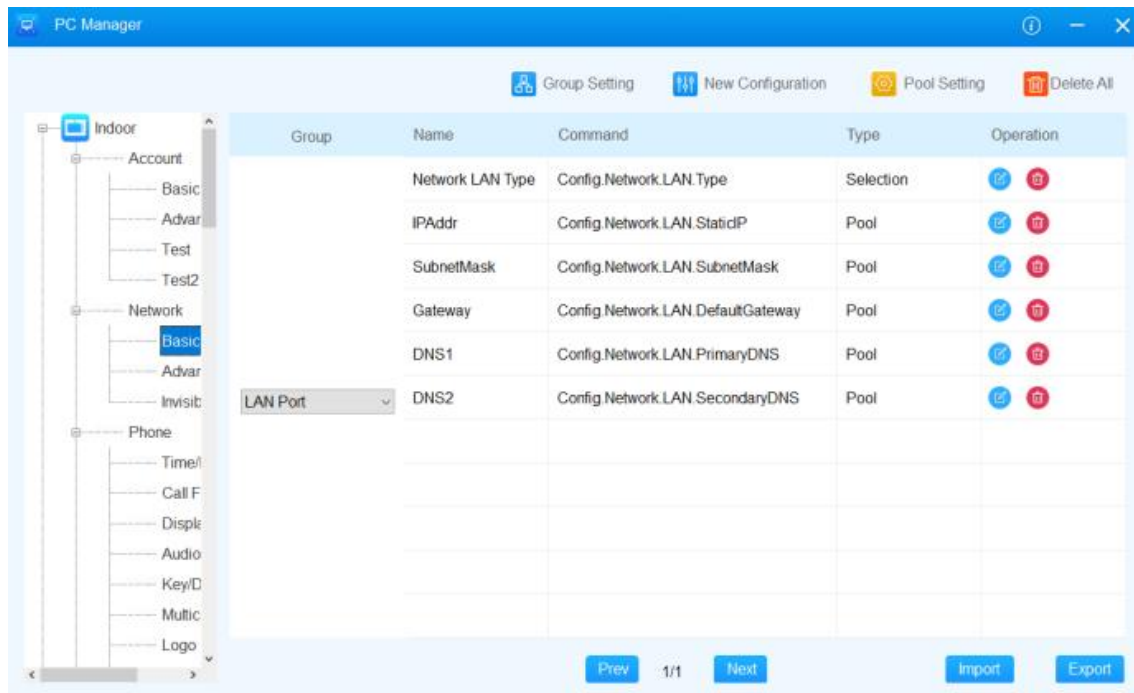
In addition to setting up the pool type configuration one by one, you can manage the pool type configuration in batch via a template when you have to deal with a large number of the pool type configurations.

1. Near the top of the interface, click  **Pool Setting**. A pop window for uploading the template is displayed.
2. Select and upload the .csv file, then click Save for the confirmation.



7. Data Backup

The data involving device root node, children, node, group, configurations, etc. can be exported out to your local PC as a backup to restore the data if needed. Or you can obtain the template with needed configurations from Akuvox technical team, then upload it to the PC manager.



● To export the data

1. On the bottom right corner of the interface, click **Export**, and a pop-out window is displayed.

Export File

Select File:

Indoor

Select Path

Export

Cancel

2. Select the device type, and select the path you want to the data file to be saved on your PC, then click **Export**. See the file sample below.

● Data file Sample:

ID	Type	PrimaryDirectory	SecondaryGroupBase	ItemName	ItemType	ItemCode	ItemCode2	ItemValueOption	DescInfo
1	Indoor	Account	Basic	SIP Account	Account1	0	Config.Account1.Q01	0:Disabled,1:Enabled	Enable/Disable this account.
2	Indoor	Account	Basic	SIP Account	DisplayA	2	Config.Account1.Q02		The label of this account, which would be displayed for users.
3	Indoor	Account	Basic	SIP Account	DisplayB	2	Config.Account1.Q03		The display name of this account, which would be displayed on remote party in a call.
4	Indoor	Account	Basic	SIP Account	ItemName	2	Config.Account1.Q04		The user name of this account, it would be provided by SIP server.
5	Indoor	Account	Basic	SIP Account	Register	2	Config.Account1.Q05		The authorization/register name of this account, it would be provided by SIP server.
6	Indoor	Account	Basic	SIP Account	Password	2	Config.Account1.Q06		The password of this account, it would be provided by SIP server.
7	Indoor	Account	Basic	SIP Account	Account2	0	Config.Account2.Q00	0:Disabled,1:Enabled	Enable/Disable this account.

● To import the data :

1. On the bottom right corner of the interface, click **Import**. A pop-out window is displayed.

Import File

Select File

Import

Cancel

2. Select the data file on your local PC, then click Import to upload the file to the PC manager.

Note

- Make sure that your computer is pre-installed with Microsoft Excel otherwise the file import and export would fail.

8. Contact Us

For more information about the product, please visit us at www.akuvox.com or feel free to contact us by

Sales email: sales@akuvox.com

Technical support email: support@akuvox.com

Telephone: +86-592-2133061 ext.7694/8162



We highly appreciate your feedback about our products.